

Namibia Consumer Price Index

JANUARY 2020



Annual inflation rate continues to slow down.



Annual inflation rate slowed to 2.1 percent in January 2020 from 4.7 percent recorded in January of the previous year. On a monthly basis, it increased to 0.6 percent from -0.1 percent.

Summary comments

Key findings

- January 2020 annual inflation rate: 2.1 percent.
- Average annual inflation rate January 2019 to January 2020: 3.6 percent.
- Twelve-month average annual inflation rate February 2019 to January 2020: 3.5 percent.

Main contributors

- Transport 33.3 percent
- Food and non-alcoholic beverages 19.0 percent
- Alcoholic beverages and tobacco 17.1 percent
- Minor groups 46.5 percent

For January 2020 the annual inflation stood at 2.1 percent down from 4.7 percent recorded in January 2019, a decrease of 2.6 percentage points. The slowdown in the annual inflation rate was mainly due to decreases registered mainly in Education (from 12.0 percent to 5.7 percent, Hotels, cafes and restaurants (from 5.0 percent to 1.1 percent), Housing, water, electricity, gas and other fuels (from 2.9 percent to -1.2 percent), Alcohol beverages and tobacco (from 6.4 percent to 2.6 percent), Food and non-alcoholic beverages (from 5.7 percent to 2.2 percent), Transport (from 7.3 percent to 5.0 percent), Recreation and culture (from 5.5 percent to 4.3 percent) and Communications (from 1.2 percent to 0.7 percent).

The monthly inflation rate increased to 0.6 percent in January 2020 compared to -0.1 percent recorded in the preceding month.

NCPI Rebasing

The NSA planned to rebase the CPI basket based on the 2015/16 Namibia Household Income and Expenditure Survey (NHIES) results. However due to methodological changes in the NHIES 2015/16 undertaken the rebasing process could not take place. The next NCPI rebasing will be done after conducting the next NHIES.

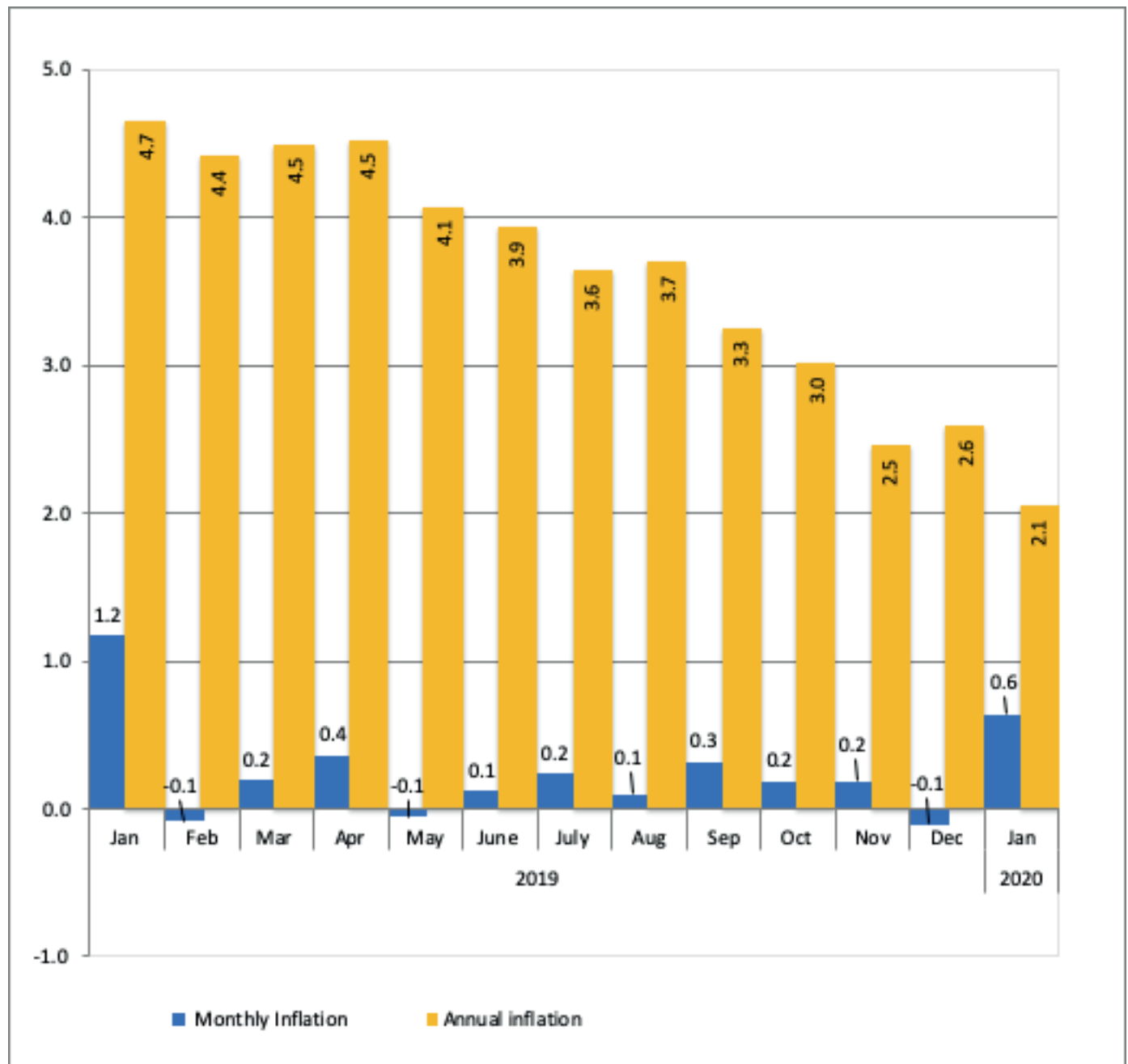
Publication of the Zonal CPIs

The NSA commenced with the publishing and disseminating Zonal CPIs edition in May 2019. The users and general public are hereby directed to find the January 2020 Zonal CPIs on pages 16 – 20 of this monthly publication.

Alex Shimuafeni
Statistician-General & CEO

Overall inflation rate

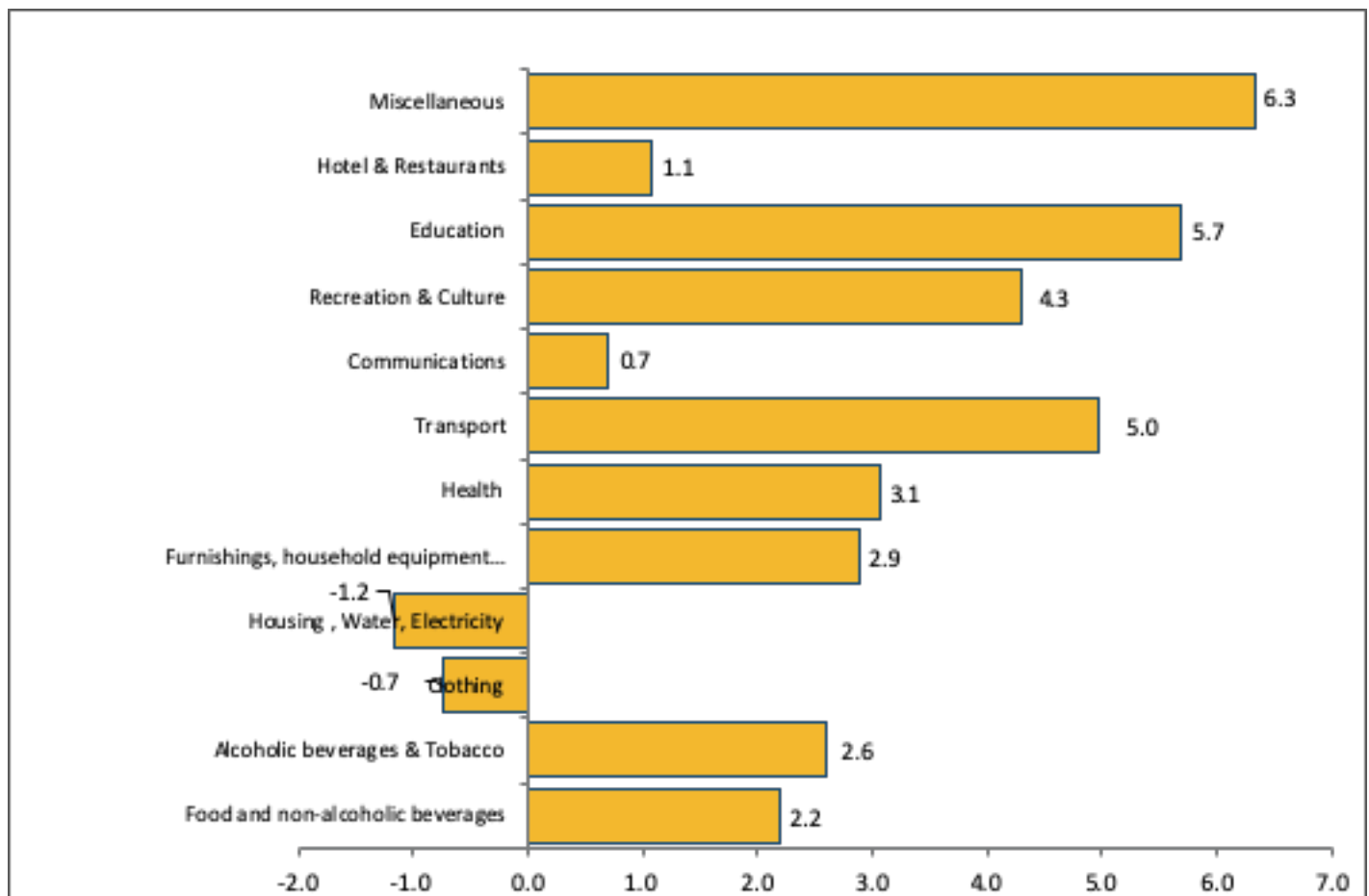
Chart 1: NCPI; Monthly and annual percentage changes; January 2020 (Dec 2012 = 100)



Main drivers of inflation

For the month of January 2020, the main drivers of annual inflation rate, were mainly Miscellaneous goods and services (6.3 percent), Transport (5.0 percent), Education (5.7 percent), Recreation and culture (4.3 percent), Health (3.1 percent) and Furnishing, household equipment and routine maintenance of the house (2.9 percent).

Chart 2: NCPI; annual percentage changes by all groups, January 2020 (Dec 2012 = 100)



BOX 1: NCPI BASKET WEIGHTS

Inflation is calculated based on a basket of goods and services, containing a representative sample of the goods and or services commonly consumed in a country, and weighted in accordance with the relative percentage of expenditure allotted to each of the said goods at household level. The price of these goods and services are then tracked over time, to illustrate the change in the cost of living over time. As spending patterns change, new products and services are added to the basket, and the basket is reweighted so as to better capture the current spending patterns of the consumer at the current point in time.

As such, the inflation basket is generally reconstituted every five years. In Namibia, the basket was last rebased in 2013, using household expenditure data collected in the 2009/10 Household Income and Expenditure Survey. The basket now contains over 350 items, grouped into 12 categories and 55 sub-categories, for which prices are collected on a monthly basis from more than 900 retail outlets.

Namibian inflation however, is largely determined by three categories of the overall NCPI basket, namely: (i) Housing, water, electricity, gas and other fuels, (ii) Food and non-alcoholic beverages and (iii) Transport, which cumulatively make up just under 60 percent of the total inflation basket. Additionally, following the rebasing of the NCPI basket in 2013, “Alcoholic beverages and tobacco” make up an additional 12.6 percent of the basket, meaning that the four largest categories represent well over 70 percent of the total basket. As such, a large increase in inflation in these categories has a greater impact on the overall inflation than increases in the lower weighted categories. Thus, it is rare to see major increases in overall inflation attributed to the lower weighted categories, despite the fact that these categories may have seen relatively high inflation in their own right.

Category	Weights (%)
Housing, Water, Electricity, Gas and Other Fuels	28.36
Food and Non- Alcoholic Beverages	16.45
Transport	14.28
Alcoholic Beverages and Tobacco	12.59
Furnishings, Household Equipment....	5.47
Miscellaneous Goods and Services	5.39
Communication	3.81
Education	3.65
Recreation and Culture	3.55
Clothing and Footwear	3.05
Health	2.01
Hotels, Cafés and Restaurants	1.39

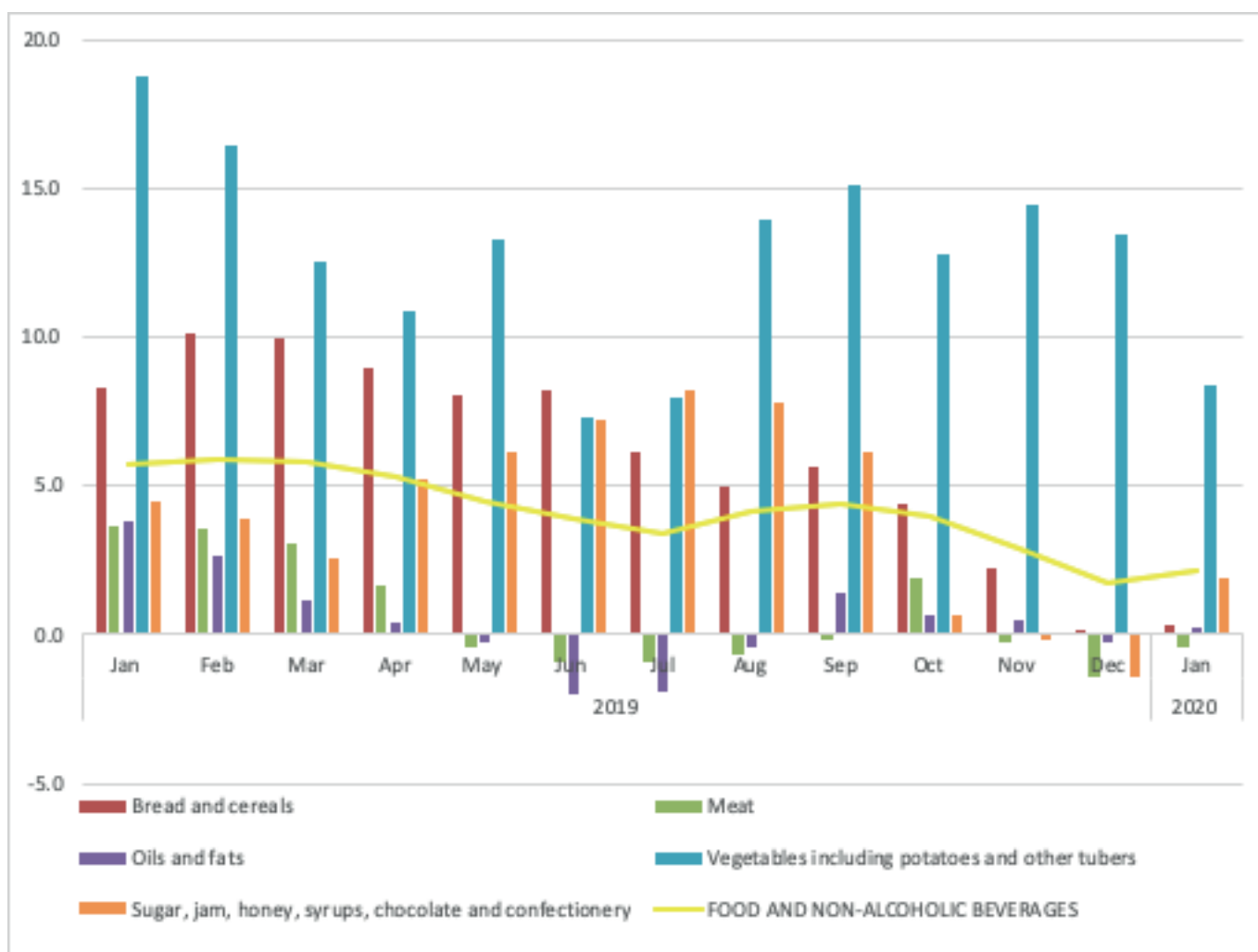
Major groups

Food and non-alcoholic beverages

The annual inflation rate for this category stood at 2.2 percent in January 2020 compared to 5.7 percent registered during the same period last year, a decrease of 3.5 percentage points. The slowdown in this group emanated from decreases recorded mainly in the subcomponents of Vegetables including potatoes and other tubers (from 18.8 percent to 8.4 percent), Bread and cereals (from 8.3 percent to 0.3 percent), Meat (from 3.6 percent to -0.5 percent), Oil and fats (from 3.8 percent to 0.2 percent) and Sugar, jam, honey, syrup, chocolate and confectionery (from 4.5 percent to 1.9 percent).

The monthly inflation rate for this category rose to 2.2 percent from -0.6 percent recorded a month earlier.

Chart 3: NCPI; Annual inflation rates for selected food sub-categories; January 2020 (Dec 2012 = 100)

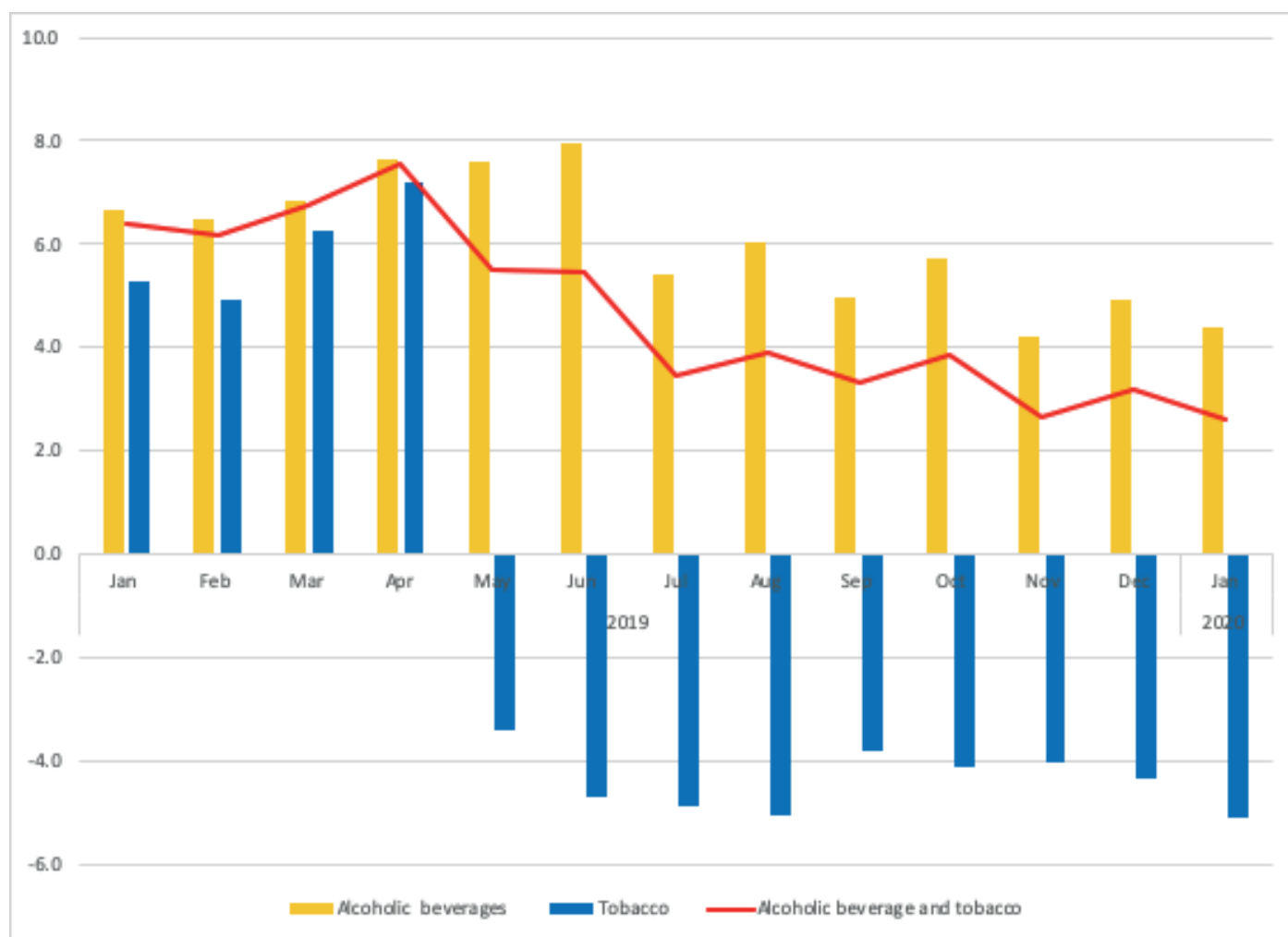


Alcoholic beverages and tobacco

The annual inflation rate for the Alcoholic beverages and tobacco group stood at 2.6 percent in January 2020 compared to 6.4 percent registered in January 2019, resulting in a decrease of 3.8 percentage points. The downward movement of inflation rate in this category during this period was due to the decline in the price levels of Alcoholic beverages and Tobacco sub-components which dropped from 6.7 percent to 4.4 percent and 5.3 percent to -5.1 percent respectively.

The monthly inflation rate for this group increased to 0.1 percent compared to -0.1 registered a month earlier.

Chart 4: NCPI; Annual inflation rate for Alcoholic beverages and Tobacco; January 2020 (Dec 2012 = 100)



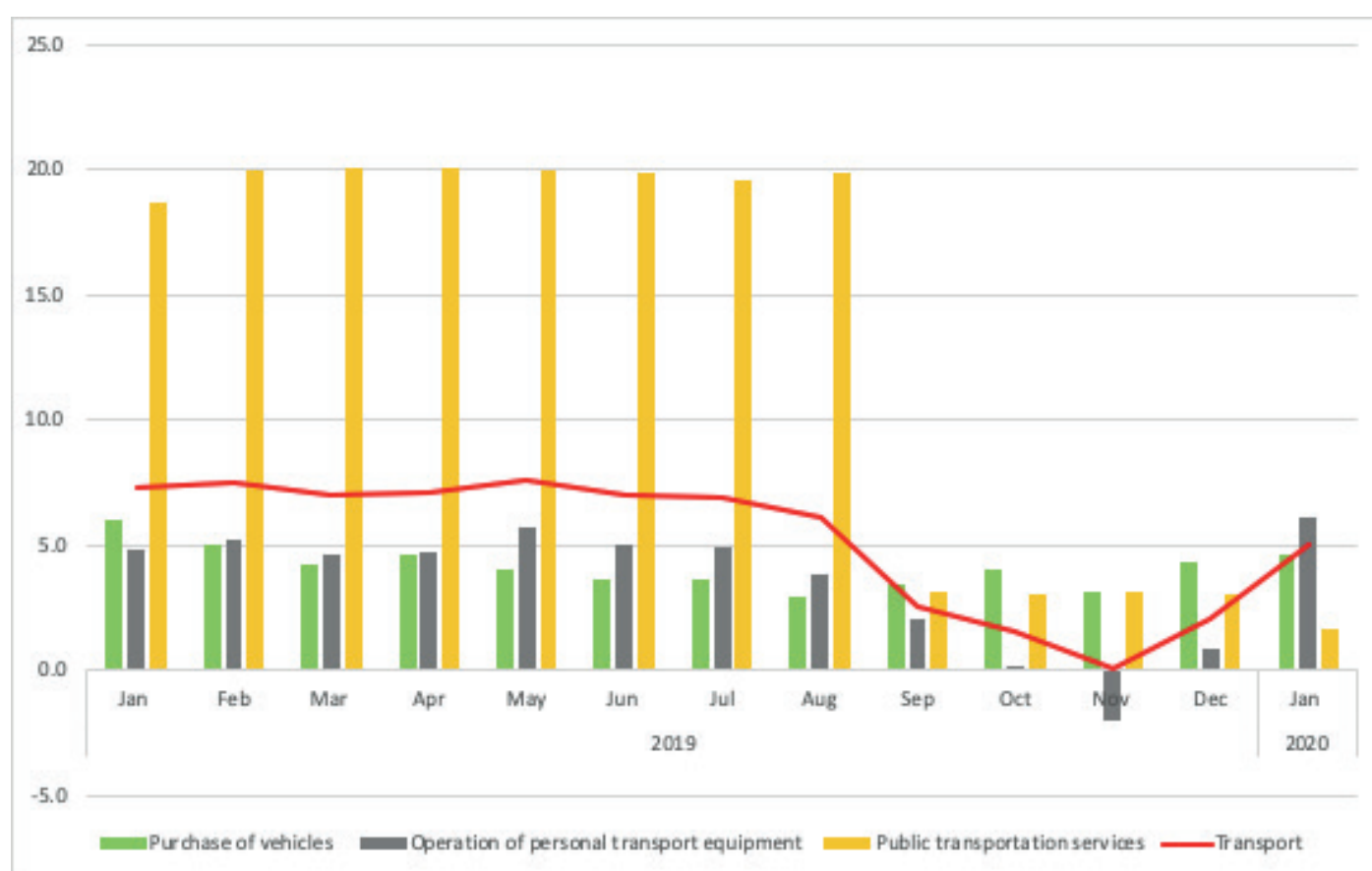
Transport

During January 2020 the annual inflation rate for the Transport component stood at 5.0 percent, resulting in a decrease of 2.3 percentage points from 7.3 percent recorded in January 2019.

The decrease emanated from declines in the price levels of Purchase of vehicles (from 6.0 percent to 4.6 percent) and Public transport services (from 18.6 percent to 1.7 percent).

The monthly inflation rate for this group slightly rose to 0.2 percent from 0.1 percent registered in a previous month.

Chart 5: NCPI; Annual inflation rate for Transport; January 2020 (Dec 2012 = 100)



Housing, water, electricity, gas and other fuels

The annual inflation rate for Housing, water, electricity, gas and other fuels category was -1.2 percent in January 2020 compared to 2.9 percent recorded during the same period a year earlier. The decrease originated from the declines registered in all the sub-components of this group, except Regular maintenance and repair of dwelling which increased from 3.3 percent to 4.2 percent during the month under review.

On a monthly basis, the inflation rate for this group declined to -1.2 percent from 0.0 percent recorded last month.

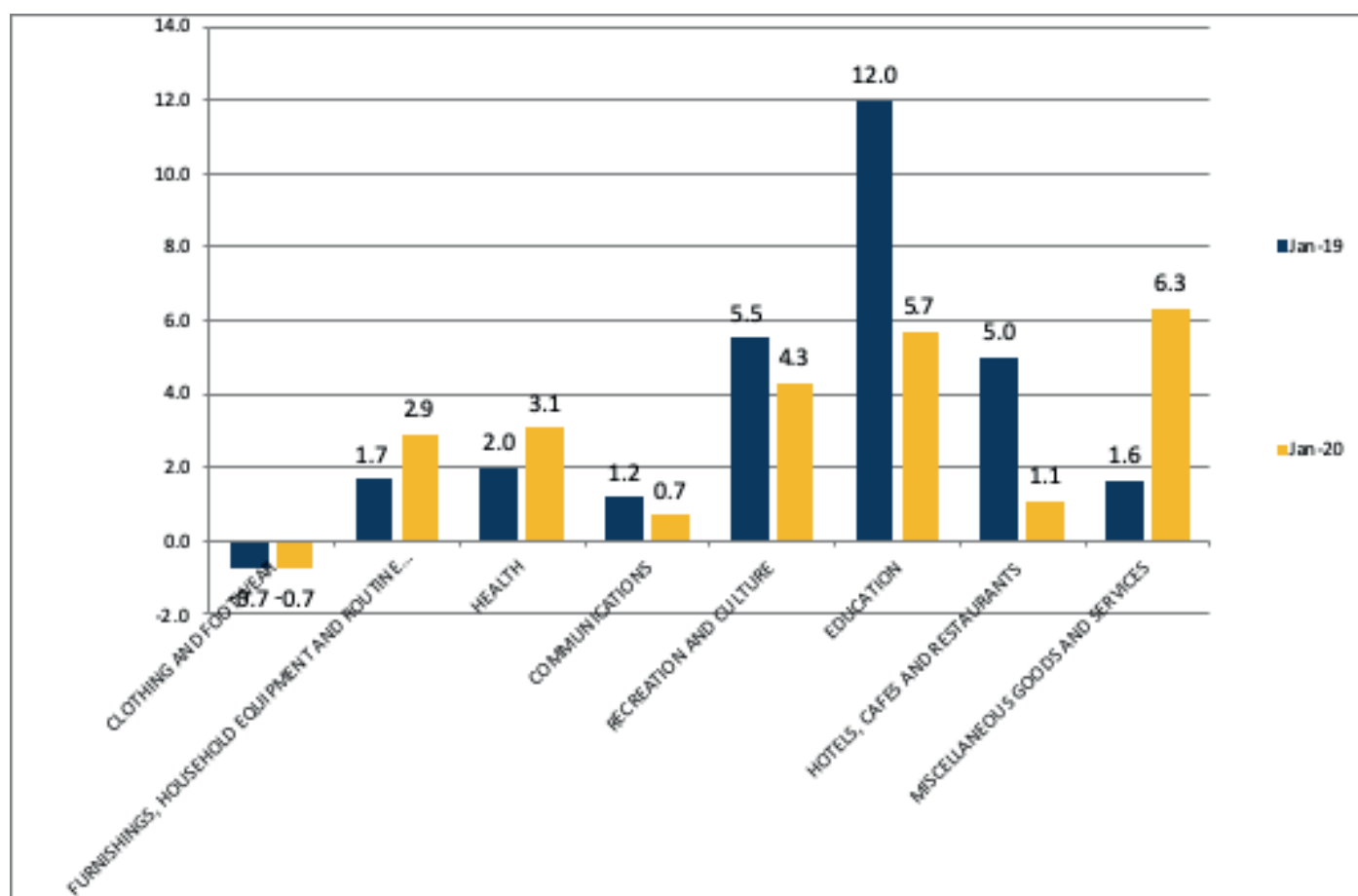
Chart 6: NCPI; Annual inflation rate for Housing, water, electricity, gas and other fuels; January 2020 (Dec 2012 = 100)



Minor groups

During January 2020, high annual inflation rates were observed in the groups of Miscellaneous goods and services (6.3 percent), Education (5.7 percent), Recreation and culture (4.3 percent), Health (3.1 percent), Furnishing, household equipment and routine maintenance of the house (2.9 percent), Hotels, cafés and restaurants (1.1 percent), while Communications registered the lowest annual inflation of (0.7 percent).

Chart 7: NCPI; Annual inflation rates for minor groups; January 2020 (Dec 2012 = 100)

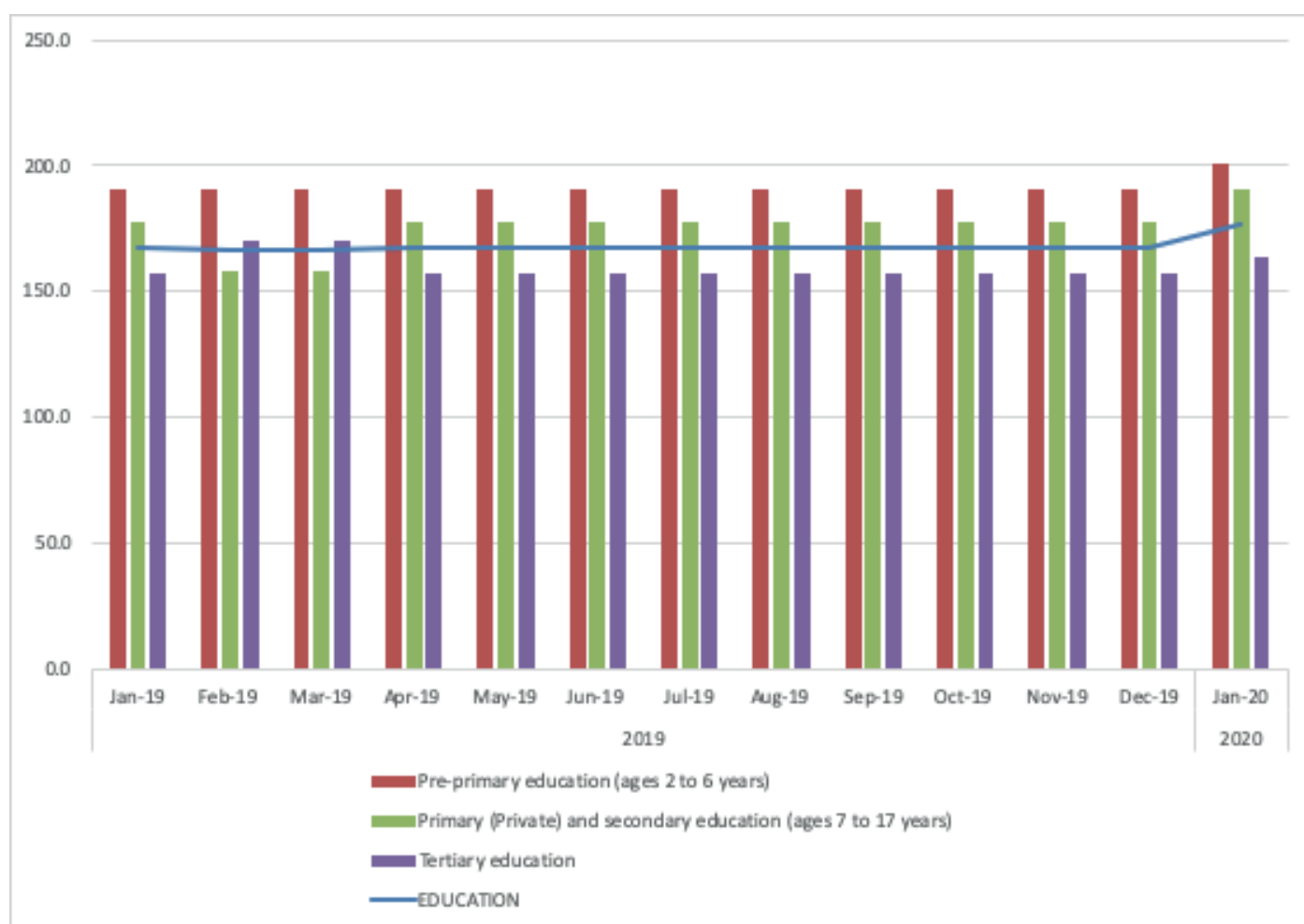


BOX 2: CHART OF THE MONTH

EDUCATION

The Index for Education for January 2020 stood at 176.9 up from 167.4 recorded during the same period last year. The increase resulted from increases in all the sub-components of this group. The monthly inflation rate for this group stood at 5.7 percent.

Chart 8: NCPI; Monthly indices for Education, January 2020 (Dec 2012 = 100)



Goods and Services inflation rates

For the month of January 2020, the Index for Goods and Services stood at 140.9 and 137.5 compared to the corresponding indices of 137.2 and 135.8 recorded during the same period last year. The monthly and annual inflation rates for Goods were 0.7 percent and 2.6 percent, while those of Services stood at 0.5 percent and 1.3 percent respectively.

Chart 9: NCPI; Goods and Services annual inflation rates; January 2020 (Dec 2012 = 100)

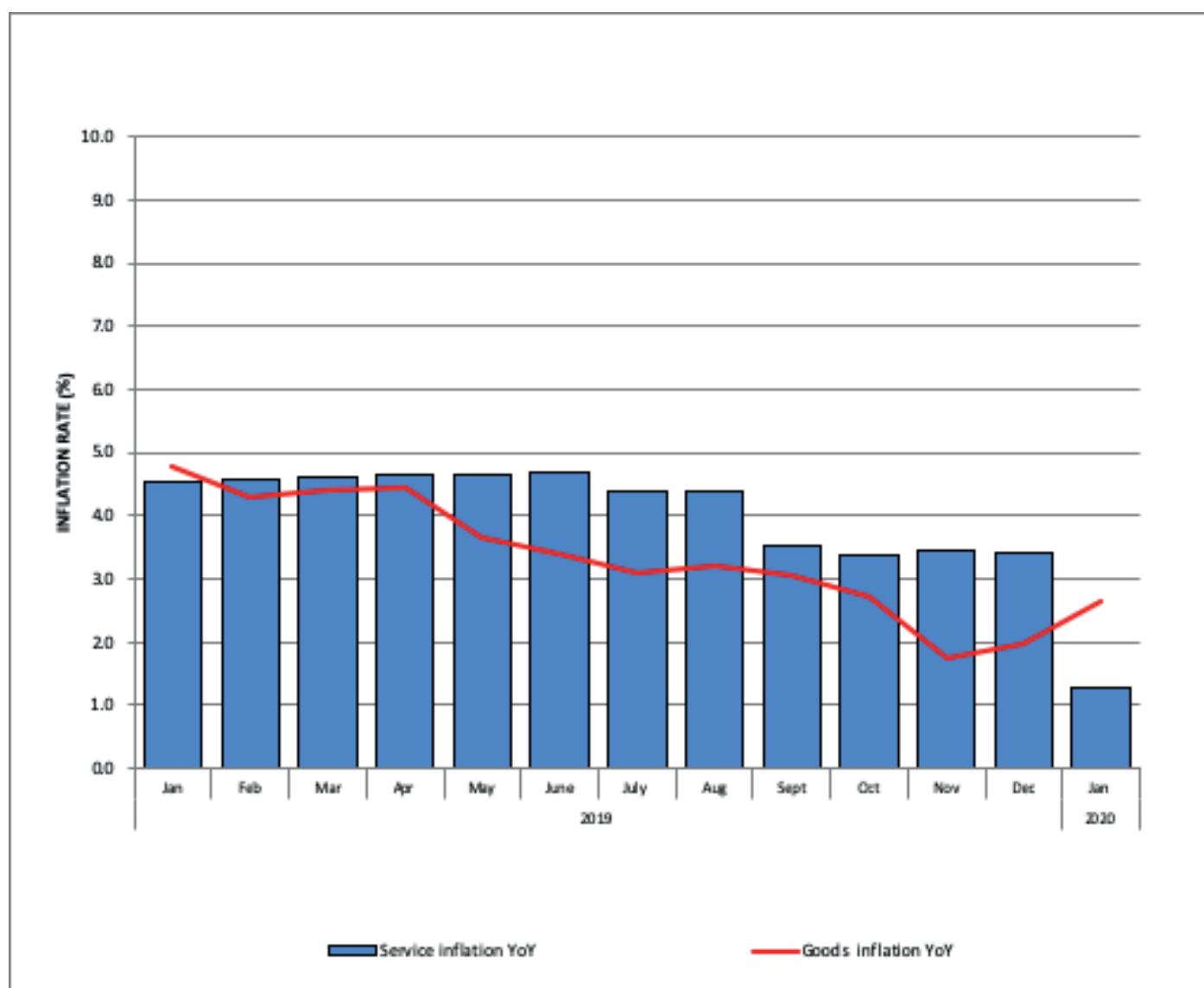


Table 1: NCPI: All-Items Index, monthly and annual percentage changes (Dec 2012 =100)

Period	Index	m-o-m	y-o-y
Jan-18	130.5	1.6	3.6
Feb-18	130.7	0.1	3.5
Mar-18	130.9	0.1	3.5
Apr-18	131.3	0.3	3.6
May-18	131.8	0.4	3.8
Jun-18	132.1	0.2	4.0
Jul-18	132.8	0.5	4.5
Aug-18	132.9	0.0	4.4
Sep-18	133.9	0.8	4.8
Oct-18	134.4	0.4	5.1
Nov-18	135.4	0.7	5.6
Dec-18	135.0	-0.2	5.1
An. Av	132.6	0.4	4.3
Jan-19	136.6	1.2	4.7
Feb-19	136.5	-0.1	4.4
Mar-19	136.8	0.2	4.5
Apr-19	137.2	0.4	4.5
May-19	137.2	-0.1	4.1
Jun-19	137.3	0.1	3.9
Jul-19	137.7	0.2	3.6
Aug-19	137.8	0.1	3.7
Sep-19	138.2	0.3	3.3
Oct-19	138.5	0.2	3.0
Nov-19	138.7	0.2	2.5
Dec-19	138.5	-0.1	2.6
An. Av	137.6	0.2	3.7
Jan-20	139.4	0.6	2.1

Table 2: NCPI for June 2019 by main groups and sub-groups (Dec.2012=100)

	Weights	CPI			Inflation Rate	
		Jan-19	Dec-19	Jan-20	m-o-m	y-o-y
ALL ITEMS	100.00	136.6	138.5	139.4	0.6	2.1
GOODS	57.7	137.2	139.9	140.9	0.7	2.6
SERVICES	42.3	135.8	136.8	137.5	0.5	1.3
FOOD AND NON-ALCOHOLIC BEVERAGES	16.45	148.1	148.2	151.4	2.2	2.2
Food	14.78	149.6	149.5	152.8	2.2	2.1
Bread and cereals	4.84	139.8	138.0	140.2	1.6	0.3
Meat	3.53	155.5	150.7	154.8	2.8	-0.5
Fish	0.81	154.1	155.6	166.3	6.8	7.9
Milk, cheese and eggs	1.17	144.3	150.8	149.5	-0.9	3.6
Oils and fats	0.78	135.2	134.7	135.5	0.6	0.2
Fruit	0.33	173.0	188.0	197.0	4.8	13.8
Vegetables including potatoes and other tubers	1.23	170.5	183.1	184.8	1.0	8.4
Sugar, jam, honey, syrups, chocolate and confectionery	1.44	157.9	155.7	160.9	3.3	1.9
Food products n.e.c.	0.65	141.8	140.0	144.3	3.1	1.8
Non-alcoholic beverages	1.66	134.8	135.9	138.4	1.8	2.7
Coffee, tea and cocoa	0.31	166.1	172.6	173.2	0.3	4.3
Mineral waters, soft drinks and juices	1.35	127.5	127.5	130.3	2.3	2.2
ALCOHOLIC BEVERAGES AND TOBACCO	12.59	147.1	150.7	150.9	0.1	2.6
Alcoholic beverages	9.99	150.4	156.7	157.0	0.2	4.4
Tobacco	2.61	134.3	127.7	127.4	-0.2	-5.1
CLOTHING AND FOOTWEAR	3.05	103.3	103.6	102.5	-1.0	-0.7
Clothing	2.04	105.5	105.7	105.2	-0.4	-0.3
Clothing materials	0.07	144.1	146.8	147.2	0.2	2.1
Ready-made clothing	1.93	104.0	104.0	103.4	-0.5	-0.5
Men's clothing	0.58	111.7	110.8	109.4	-1.2	-2.0
Women's clothing	0.70	89.5	90.4	91.1	0.7	1.8
Children's clothing	0.66	111.3	110.8	109.8	-0.9	-1.3
Boys' clothing	0.24	108.2	112.3	111.6	-0.6	3.2
Girls' clothing	0.33	114.2	109.1	107.9	-1.0	-5.5
Infants' clothing	0.09	110.7	114.9	114.0	-0.8	3.0
Other articles of clothing and clothing accessories	0.05	115.4	115.7	119.0	2.8	3.1
Dry cleaning, repair and hire of clothing	0.00	131.1	134.1	129.9	-3.1	-0.9
Footwear	1.01	98.7	99.4	97.1	-2.3	-1.7
Adult footwear	0.80	94.0	93.5	90.7	-2.9	-3.5
Children's footwear	0.20	114.6	120.3	119.6	-0.6	4.4
Repair of footwear	0.01	145.3	148.5	146.6	-1.3	0.9
HOUSING, WATER, ELECTRICITY, GAS AND OTHER FUELS	28.36	131.4	134.0	134.1	0.0	2.0
Rental payments for dwelling (both owners and renters)	23.28	129.7	129.7	127.7	-1.5	-1.5
Regular maintenance and repair of dwelling	0.19	136.7	142.2	142.4	0.2	4.2
Water supply, sewerage service and refuse collection	1.03	174.3	180.9	180.9	0.0	3.8
Electricity gas and other fuels	3.86	157.0	155.6	155.5	0.0	-1.0

Table 2: NCPI for Jan 2020 by main groups and sub-groups (Dec.2012=100)

	Weights	CPI			Inflation Rate	
		Jan-19	Dec-19	Jan-20	m-o-m	y-o-y
FURNISHINGS, HOUSEHOLD EQUIPMENT AND ROUTINE MAINTENANCE OF THE HOUSE	5.47	125.2	127.9	128.8	0.8	2.9
Furniture, furnishings, decorations, carpets, floor coverings, incl. repairs	1.78	99.5	99.5	99.7	0.1	0.2
Furniture and furnishings	1.69	98.1	98.2	98.3	0.1	0.2
Carpets and other floor coverings	0.07	108.8	107.6	109.0	1.3	0.2
Repair of furnishings and floor coverings	0.02	199.2	199.2	200.2	0.5	0.5
Household textiles	0.73	131.4	134.9	137.2	1.7	4.4
Heating and cooking appliances, refrigerators, washing machines and similar major household appliances, etc	0.92	127.3	128.1	128.8	0.5	1.1
Glassware, tableware and household utensils	0.22	146.6	147.8	146.9	-0.7	0.2
Tools and equipment for house and garden	0.43	127.8	132.1	132.5	0.4	3.7
Goods and services for routine household maintenance	1.36	149.8	156.3	158.4	1.3	5.7
HEALTH	2.01	133.9	136.4	138.0	1.1	3.1
Medical products, appliances and equipment	0.84	126.6	132.7	133.2	0.4	5.2
Outpatient Services, medical, dental and paramedical	0.98	146.5	146.5	149.3	1.9	1.9
Hospital services	0.19	100.0	100.0	100.0	0.0	0.0
TRANSPORT	14.28	131.3	137.5	137.8	0.2	5.0
Purchase of vehicles	2.88	154.3	161.2	161.4	0.1	4.6
Operation of personal transport equipment	8.96	122.5	129.6	130.0	0.3	6.1
Public transportation services	2.44	136.5	138.8	138.8	0.0	1.7
COMMUNICATIONS	3.81	108.2	108.5	108.9	0.4	0.7
RECREATION AND CULTURE	3.55	131.4	138.3	137.0	-1.0	4.3
Audio-visual, photographic and data processing equip. incl. repairs	1.16	119.2	124.4	121.7	-2.1	2.1
Other major durables for recreation and culture	0.08	131.2	132.2	132.8	0.4	1.2
Other recreational items and equipment; flowers, gardens and pets	0.46	126.5	133.2	133.2	0.0	5.3
Recreation and cultural services	0.85	138.6	141.9	141.8	-0.1	2.2
Newspapers, books and stationery	0.89	137.4	149.3	147.9	-0.9	7.7
Package holidays	0.11	175.0	194.1	191.0	-1.6	9.2
EDUCATION	3.65	167.4	167.3	176.9	5.7	5.7
Pre-primary education (ages 2 to 6 years)	0.23	190.5	190.5	201.2	5.6	5.6
Primary (private) and Secondary education (ages 7 to 17 years)	1.44	178.0	177.8	190.8	7.3	7.2
Tertiary education	1.98	157.0	157.0	163.9	4.4	4.4
HOTELS, CAFES AND RESTAURANTS	1.39	145.9	148.9	147.4	-1.0	1.1
Catering	0.74	143.9	146.3	146.6	0.2	1.9
Accommodation services	0.65	148.2	151.9	148.4	-2.3	0.2
MISCELLANEOUS GOODS AND SERVICES	5.39	131.1	131.7	139.4	5.8	6.3
Personal care	1.41	134.8	135.6	137.7	1.6	2.1
Personal effects n.e.c.	1.03	123.9	125.4	126.9	1.2	2.5
Insurance	0.74	101.8	101.7	104.6	2.8	2.8
Financial services n.e.c.	0.94	168.1	168.1	190.9	13.5	13.5
Other services n.e.c.	1.26	122.5	123.2	133.8	8.6	9.2

Zonal Consumer Price Index

Background

Since January 2005, the then Central Bureau of Statistics (CBS) under the National Planning Commission (NPC) published a monthly Consumer Price Index known as the Namibia Consumer Price Index (NCPI) for replacing the Interim Consumer Price Index (ICPI) which has been in existence since 1993. The Index was known as the Interim Consumer Prices Index-Windhoek and refers to the expenditure patterns of the households which resided in Windhoek. The weights and items were derived from a Household Expenditure Survey covering 800 households conducted during October and November 1985.

The NCPI is designed to cover the entire economic territory of the country and includes national, urban and rural households of all income groups as derived from the Namibia Household Income and Expenditure Survey (NHIES). For the compilation of the National CPI, all administrative regions of the country were grouped into three Zones, with each zone considered as one geographic area as follows.

Zone 1 covers the expenditure patterns of the regions in the northern part of the country namely Kavango East, Kavango West, Kunene, Ohangwena, Omusati, Oshana, Oshikoto, Otjozondjupa and Zambezi. Prices are collected from the following towns: Katima Mulilo (76 retail outlets covering mainly the Central Business District); Oshakati (107 retail outlets covering mainly Game Shopping Center, Yetu Shopping Center, Oshana Mall, Marula Mall and Ongwediva); and Otjiwarongo (114 retail outlets covering mainly the Central Business District, Orwetoveni, and the Industrial Area).

Zone 2 covers the expenditure patterns of Khomas region and the price collection covers Windhoek (218 retail outlets covering mainly Khomasdal, Katutura, Northern Industrial Area, Southern Industrial Area, Pioneers Park, Hochland Park, Prosperita, Klein Windhoek, Eros and Kleine Kuppe).

Zone 3 covers the expenditure patterns of //Karas, Erongo, Hardap, and Omaheke regions with prices being collected from Keetmanshoop (86 retail outlets covering mainly Central Business District, West Dene and Tseiblagte); Swakopmund (108 retail outlets covering Central Business District, Mondesa, Tamariskia, Industrial Area); Mariental (61 retail outlets covering mainly Central Business District and Ombili); as well as Gobabis (59 retail outlets mainly covering the Central Business District), respectively.

The localities identified for price collection were selected based on a mixed criterion of:

- (i) the relative importance of the locality as determined by its relative share exceeding 30 percent of the total household expenditure at national level;
- (ii) geographic distribution of economic activities; and
- (iii) regional capitals.

Summary comments of Zonal CPIs

Zone 1 CPI (Northern Part)

For January 2020, the All Items Index was estimated at 139.7, up 3.6 percentage points from 136.1 registered in January 2019. The annual inflation rate fell to 2.7 percent in January 2020 from 4.2 percent recorded in January of the previous year, a decrease of 1.5 percentage points. The decrease in the annual inflation rate resulted mainly from declines in the price levels of Transport (from 8.2 percent to 4.3 percent); Housing, water, electricity, gas and other fuels (2.5 percent to -1.3 percent); Food and non-alcoholic beverage (from 4.7 percent to 3.6 percent) and Alcohol and tobacco (from 5.4 percent to 4.6) percent.

On a monthly basis, the inflation rate for January 2020 stood at 1.2 percent compared to -0.3 percent recorded last month.

Table 1: Zone 1 CPI: All-Items Index, monthly and annual percentage changes (Dec 2012 =100)

Period		Monthly Index	Monthly inflation rate	Annual inflation rate
2018	Jan	130.6	1.6	3.5
	Feb	130.4	-0.1	3.2
	Mar	130.7	0.2	3.4
	Apr	131.1	0.4	3.7
	May	131.9	0.6	4.3
	Jun	131.9	0.0	4.0
	Jul	132.8	0.7	4.6
	Aug	132.7	-0.1	4.8
	Sep	133.7	0.8	5.3
	Oct	134.1	0.3	5.2
	Nov	135.6	1.1	5.9
	Dec	134.7	-0.7	4.8
	An. Av	132.5	0.4	4.4
2019	Jan	136.1	1.0	4.2
	Feb	135.8	-0.2	4.1
	Mar	136.0	0.2	4.1
	Apr	136.1	0.1	3.8
	May	136.3	0.1	3.3
	Jun	136.5	0.2	3.5
	Jul	137.1	0.5	3.3
	Aug	137.3	0.1	3.5
	Sep	137.7	0.3	3.0
	Oct	137.8	0.1	2.8
	Nov	138.5	0.5	2.2
	Dec	138.1	-0.3	2.5
	An. Av	136.9	0.2	3.4
2020	Jan	139.7	1.2	2.7

Zone 2 CPI (Windhoek Area)

The All items Index for January 2020 stood at 135.1 compared to 133.7 recorded during the same period last year.

The annual inflation rate declined from 4.9 percent to 1.0 percent, a decrease of 3.9 percentage points. The decrease resulted mainly from slow down in price levels of Education (from 15.2 percent to 4.0 percent), Alcoholic beverages and tobacco (from 6.1 percent to -2.3 percent), Hotels, cafes and restaurants (from 8.0 percent to 0.9 percent), Food and non-alcoholic beverages (from 6.5 percent to -0.3 percent), Housing, water electricity, gas and other fuels (from 3.3 percent to -1.4 percent), Recreation and culture (6.7 percent to 4.2 percent) and Clothing and footwear (from 1.0 percent to -1.1 percent).

On a monthly basis, the inflation rate for January 2020 stood at 0.2 percent compared to 0.1 percent recorded last month.

Table 1: Zone 2 CPI: All-Items Index, monthly and annual percentage changes (Dec 2012 =100)

Period		Monthly Index	Monthly inflation rate	Annual inflation rate
2018	Jan	127.4	1.4	3.2
	Feb	127.6	0.2	3.2
	Mar	127.8	0.2	3.1
	Apr	128.3	0.4	3.0
	May	128.6	0.2	2.9
	Jun	129.1	0.4	3.2
	Jul	129.9	0.6	3.9
	Aug	129.9	0.0	4.4
	Sep	130.9	0.8	4.4
	Oct	131.5	0.4	5.0
	Nov	132.1	0.5	5.1
	Dec	131.9	-0.2	5.0
	An. Av	129.6	0.4	3.9
2019	Jan	133.7	1.4	4.9
	Feb	133.3	0.0	4.4
	Mar	133.7	0.3	4.6
	Apr	134.7	0.8	5.0
	May	133.9	-0.6	4.1
	Jun	133.9	0.0	3.7
	Jul	133.8	-0.1	3.0
	Aug	133.8	0.0	3.1
	Sep	134.5	0.5	2.7
	Oct	134.7	0.2	2.5
	Nov	134.7	-0.1	1.9
	Dec	134.8	0.1	2.2
	An. Av	134.1	0.2	3.5
2020	Jan	135.1	0.2	1.0

Zone 3 CPI (Eastern, Southern & Western Parts)

The All Items Index for January 2020 stood at 146.1 compared to 142.3 recorded during same period last year.

The annual inflation rate declined from 4.9 percent to 2.7 percent, a decrease of 2.2 percentage points. The decline resulted from decreases recorded in all groups comprising Zone 3 CPI, except Miscellaneous goods and services and Communications which increased from 1.6 percent to 3.5 percent and 1.6 percent to 2.2 percent, respectively.

On a monthly basis, the inflation rate for January 2020 stood at 0.5 percent compared to -0.1 percent recorded last month.

Table 3: Zone 3 CPI: All-Items Index, monthly and annual percentage changes (Dec 2012)

Period		Monthly Index	Monthly inflation rate	Annual inflation rate
2018	Jan	135.6	2.2	4.5
	Feb	136.3	0.5	4.8
	Mar	136.5	0.1	4.9
	Apr	136.7	0.1	4.8
	May	137.1	0.3	5.1
	Jun	137.6	0.4	5.6
	Jul	137.9	0.2	5.6
	Aug	138.3	0.3	5.1
	Sep	139.1	0.6	5.2
	Oct	139.8	0.5	5.9
	Nov	140.5	0.5	6.0
	Dec	140.8	0.2	6.1
	Av	138.0	0.5	5.3
2019	Jan	142.3	1.0	4.9
	Feb	142.9	0.4	4.9
	Mar	143.1	0.1	4.9
	Apr	143.3	0.1	4.8
	May	144.0	0.5	5.1
	June	144.4	0.2	4.9
	July	144.9	0.3	5.1
	Aug	145.2	0.2	4.9
	Sep	145.2	0.03	4.4
	Oct	145.5	0.20	4.1
	Nov	145.5	-0.01	3.6
	Dec	145.4	-0.1	3.2
	Av	144.3	0.3	4.6
2020	Jan	146.1	0.5	2.7

Note: The above Zonal CPIs time series run from 2018 only for illustrative purposes and for comparing with the previous years. However, the figures for Zonal CPIs are available since the NCPI inception in 2002.

Additional detailed information on Zonal CPIs see excel tables as Annex.

Annex I: Zone 1

- (i) Table 1: CPI Zone 1: All-Items Index, monthly and annual percentage changes
- (ii) Table 2: CPI Zone 1 Indices
- (iii) Table 3: CPI Zone 1 Monthly Percentage Changes
- (iv) Table 4: CPI Zone 1 Annual Percentage Changes

Annex II: Zone 2

- (v) Table 1: CPI Zone 2: All-Items Index, monthly and annual percentage changes
- (vi) Table 2: CPI Zone 2 Indices
- (vii) Table 3: CPI Zone 2 Monthly Percentage Changes
- (viii) Table 4: CPI Zone 2 Annual Percentage Changes

Annex III: Zone 3

- (ix) Table 1: CPI Zone 3: All-Items Index, monthly and annual percentage changes
- (x) Table 2: CPI Zone 3 Indices
- (xi) Table 3: CPI Zone 3 Monthly Percentage Changes
- (xii) Table 4: CPI Zone 3 Annual Percentage Changes

Namibia Consumer Price Index

JANUARY 2020



Namibia Statistics Agency (NSA), FGI House,
44 Post Street Mall, Windhoek, Namibia,
P.O.Box 2133, Windhoek, Namibia
Tel: 061-431 3200, Fax: 061-4313253
www.nsa.org.na