

# Namibia Consumer Price Index Bulletin

JULY 2020



# TABLE OF CONTENTS

---

Preface.....	3
Key highlights.....	4
Contributions of the different groups to the annual % change in NCPI.....	4
Overall Inflation rate .....	5
Annual Inflation rate by main categories.....	6
Selected main categories annual inflation rate.....	7
Goods and Services inflation rate.....	14
NCPI basket weights.....	18
Annex A: NCPI: All-Items Index, monthly and annual percentage changes (Dec 2012 =100).....	19
Annex B: NCPI for July 2020 by main groups and sub-groups (Dec.2012=100).....	21
Annex 1: Background on Zonal Consumer Price Index.....	22
Annex 2: Zonal CPI weights .....	23
Additional detailed information on zonal CPIs .....	23

# PREFACE

---



This report examines the monthly inflation rate performance in Namibia as measured by the Consumer Price Index. The Namibia Consumer Price Index (NCPI) is used as the basis to calculate the rate of inflation as experienced by consumers. More than 9000 prices of goods and services are collected on a monthly basis from more than 900 retail outlets in 8 localities. The NCPI weights represent the expenditure share of each commodity in the 2009/10 Namibia Household Income and Expenditure Survey (NHIES). The Consumer Price Index is published about 15 days after the end of the reference month to which it relates.

The inflation rate measures the change in the CPI for the month under review to the previous month (month-on-month change) as well as to the corresponding month in the previous year (year-on-year change). The inflation rate is vital for purposes of economic policy-making, especially the conduct of monetary policy and to consumers in general. It is further used in a wide variety of public and private contracts for the purposes of adjusting payments (such as wages, rents, interest and social security benefits). It therefore, has substantial and wide-ranging financial implications for governments and businesses, as well as for households.

In July 2020, the annual inflation rate slowed to 2.1 percent from 3.6 percent recorded in July 2019 while on a monthly basis, the inflation rate remained unchanged at 0.2 percent. The slowdown in the annual inflation rate in July 2020 was largely attributed to declines registered in the price levels of Transport (from 6.9 percent to -1.2 percent); Clothing and footwear (from 1.2 percent to -4.3 percent); Education (from 12.0 percent to 7.0 percent) Hotel, cafés and restaurants (from 3.9 percent to 0.8) and Housing, water, electricity, gas and other fuels (from 2.2 percent to -1.5 percent).

The Zonal inflation rates for the month of July 2020 revealed that, Zone 1 (Kavango East, Kavango West, Kunene, Ohangwena, Omusati, Oshana, Oshikoto, Otjozondjupa, and Zambezi) annual inflation rate stood at 2.1 percent. For Zone 2 (Karas, Erongo, Hardap and Omaheke) registered inflation rate of 1.5 percent year on year. Zone 1 and 2, month on month inflation rates stood at 0.2 percent and 0.3 percent respectively while Zone 3 inflation was stagnant.

A handwritten signature in black ink, appearing to read 'Alex Shimuafeni', written over a horizontal line.

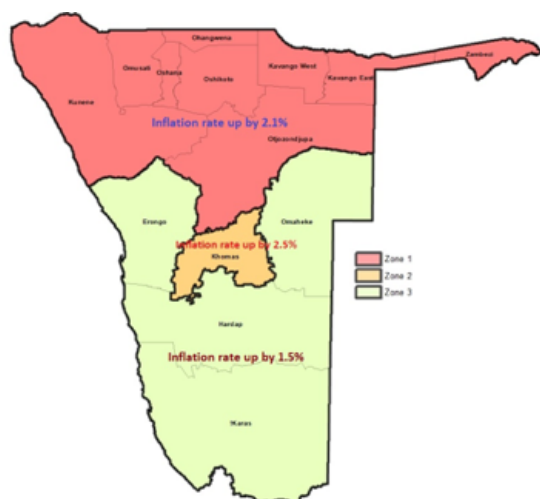
Alex Shimuafeni  
**Statistician-General & CEO**



## Annual inflation rates slow down.

The annual inflation rate slowed to 2.1 percent compared to 3.6 percent recorded in July 2019. On a monthly basis inflation rate remained unchanged at 0.2 percent.

### Box 1: Key highlights



- o The annual inflation rate for Goods was estimated at **2.4 percent**
- o The annual inflation rate for Services stood at **1.6 percent**
- o The average annual inflation rate for July 2019 to July 2020 stood at **2.6 percent.**
- o The twelve-month average annual inflation rate from August 2019 to July 2020 was estimated at **2.5 percent**

### BOX 2: Contributions of the different groups to the annual percentage change in NCPI

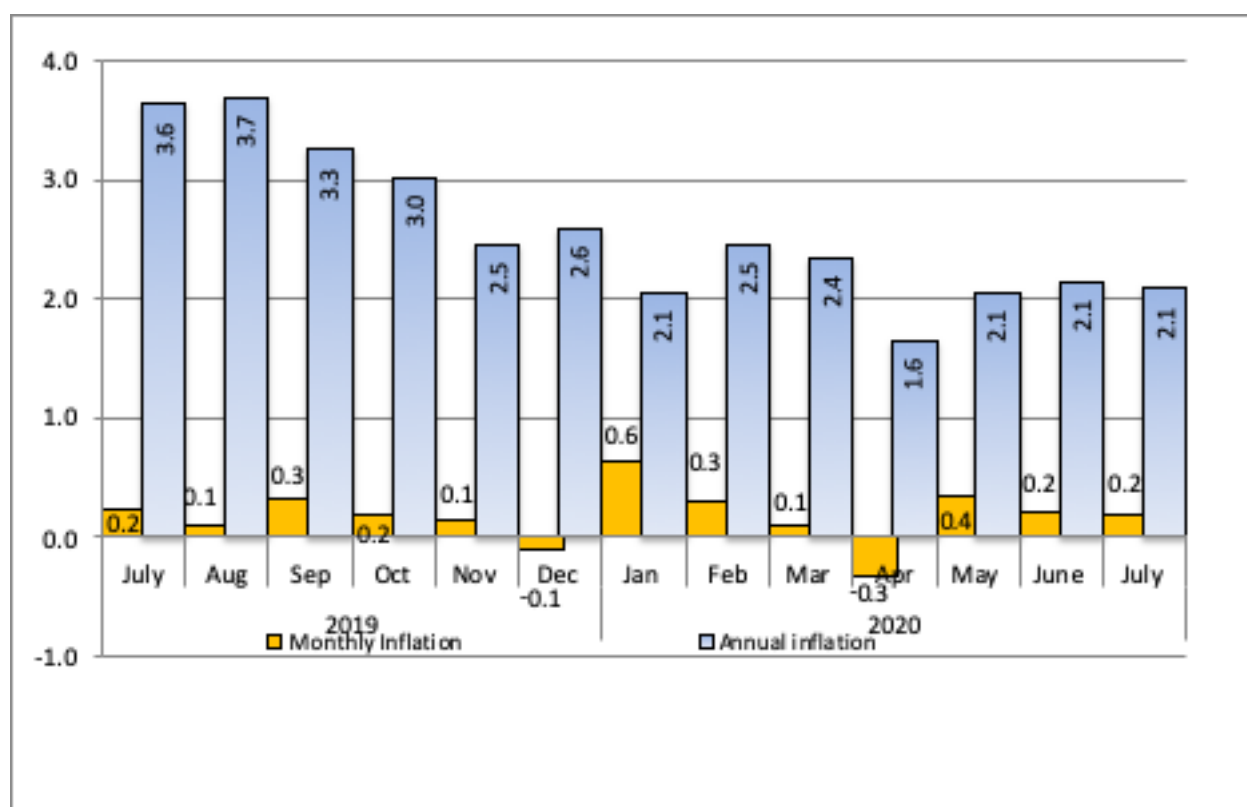
Groups	Contributions (%)	
	June 2020	July 2020
Food and non-alcoholic beverages	0.8	1.1
Alcoholic, beverages and tobacco	0.5	0.6
Clothing and footwear	0.0	-0.1
Housing, water, electricity, gas & other fuels	-0.2	-0.4
Furnishings, household equipment etc	0.1	0.1
Health	0.1	0.1
Transport	-0.1	-0.2
Communication	0.1	0.1
Recreation and culture	0.2	0.2
Education	0.3	0.3
Hotels, cafes and restaurants	0.0	0.0
Miscellaneous goods and services	0.3	0.3
<b>All items</b>	<b>2.1</b>	<b>2.1</b>

## Overall inflation rate

During the month of July 2020, the annual inflation stood at 2.1 percent, down from 3.6 percent recorded in July 2019, a decrease of 1.6 percentage points. The slowdown in the annual inflation rate between July 2019 and July 2020 emanated mainly from the categories of Housing, water, electricity, gas and other fuels (2.2 percent to -1.5 percent), which accounts for 28.4 percent of the overall basket of NCPI, and Transport, which accounts for 14.3 percent of the overall basket of NCPI declined to -1.2 percent compared to 6.9 percent recorded in July 2019. Other categories which contributed to the deceleration of the annual inflation rate were Education that fell to 7.0 percent from 12.0 percent recorded in July 2019 that accounts for 3.7 percent of the overall basket of NCPI, Clothing and footwear, from 1.2 percent to -4.3 percent that accounts for 3.1 percent of the overall NCPI basket and Hotels, cafes and restaurants from 3.9 percent to 0.8 percent which accounts for 1.4 percent of the overall NCPI basket.

The monthly inflation rate stood at 0.2 percent in July 2020 unchanged from the preceding month.

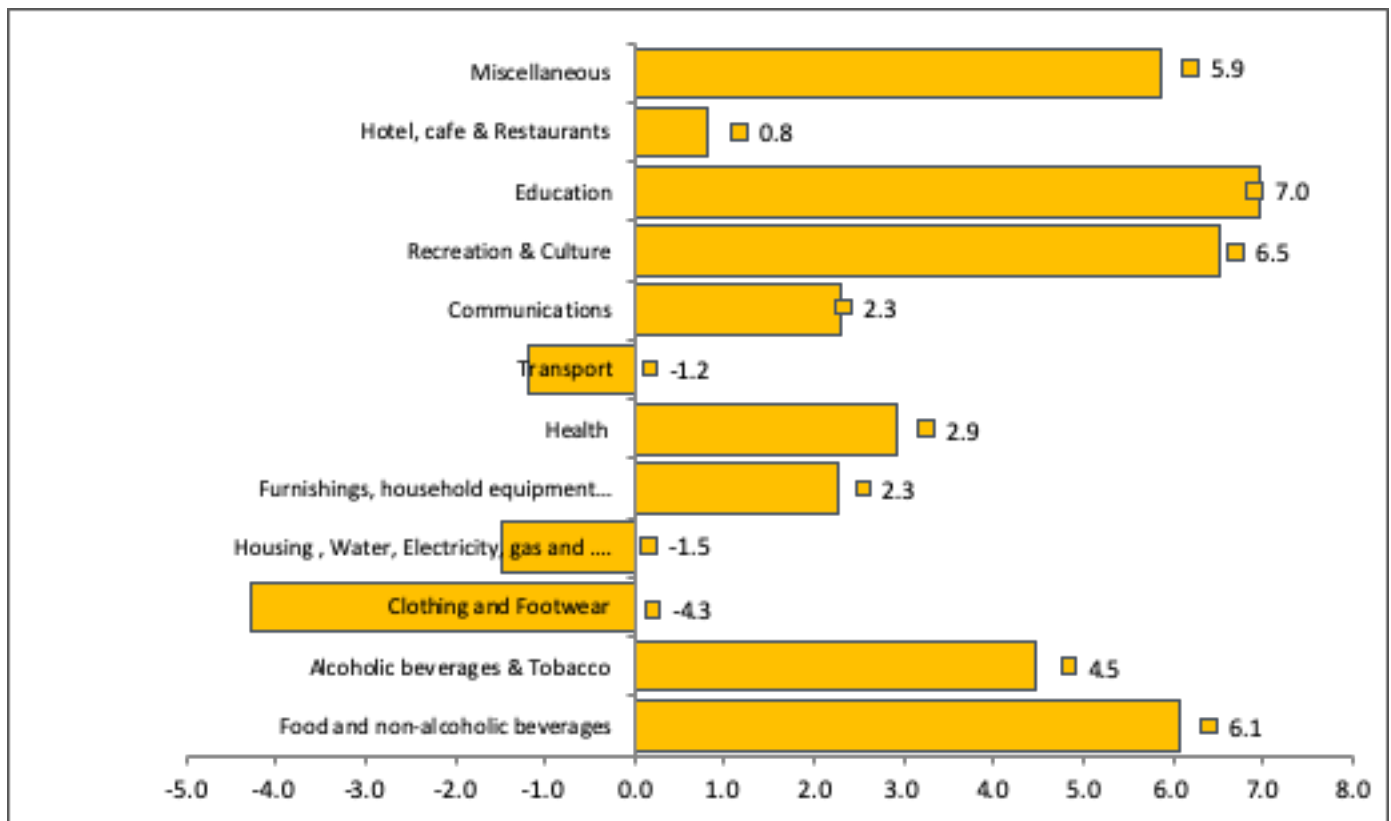
**Chart 1: Monthly and annual percentage changes (%); July 2020 (Dec 2012 = 100)**



## Annual inflation rate by main categories

The Education category recorded the highest rise in annual inflation with a rate of 7.0 percent in July 2020, followed by Recreation and culture at 6.5 percent, Food and non-alcoholic beverages at 6.1 percent, Miscellaneous goods and service at 5.9 percent. While, Clothing and footwear; Housing, water, electricity, gas and other fuels; and Transport categories recorded declines of -4.3 percent and -1.5 percent and -1.2 percent respectively.

Chart 2: Annual percentage changes (%) by all groups, July 2020 (Dec 2012 = 100)



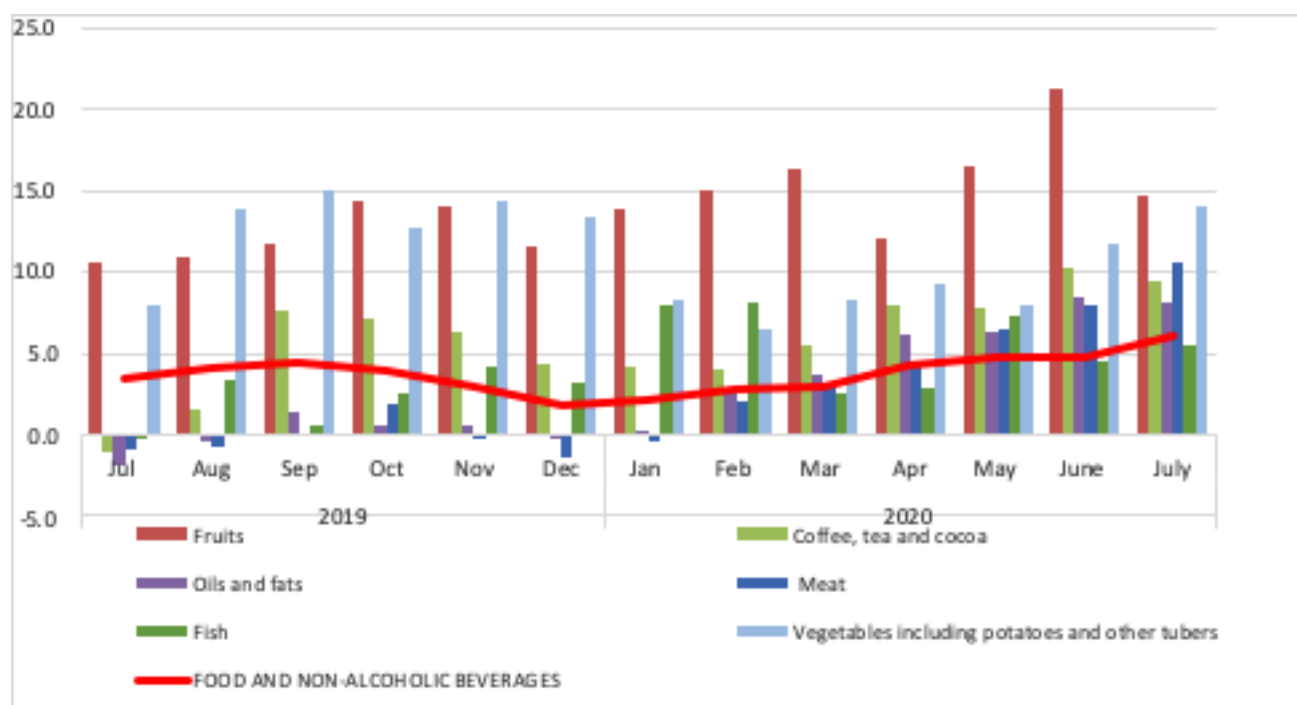
## Selected main categories' annual inflation rates

### Food and non-alcoholic beverages

The annual inflation rate for this category stood at 6.1 percent in July 2020 compared to 3.4 percent registered during the same period last year, an increase of 2.7 percentage points. The increase in this group emanated mainly from price increases in Meat (from -0.9 percent to 10.6 percent); Coffee, tea and cocoa (from -1.1 percent to 9.5 percent); Oils and fats (from -1.9 percent to 8.1 percent); Fish (from -0.3 percent to 5.5 percent); Fruit (from 10.5 percent to 14.7 percent) and Vegetables including potatoes and other tubers (from 7.9 percent to 14.0 percent).

On a monthly basis the inflation rate for this category increased to 0.7 percent compared to -0.3 percent recorded last month.

**Chart 3: Annual inflation rates (%) for selected food sub-categories; July 2020 (Dec 2012 = 100)**

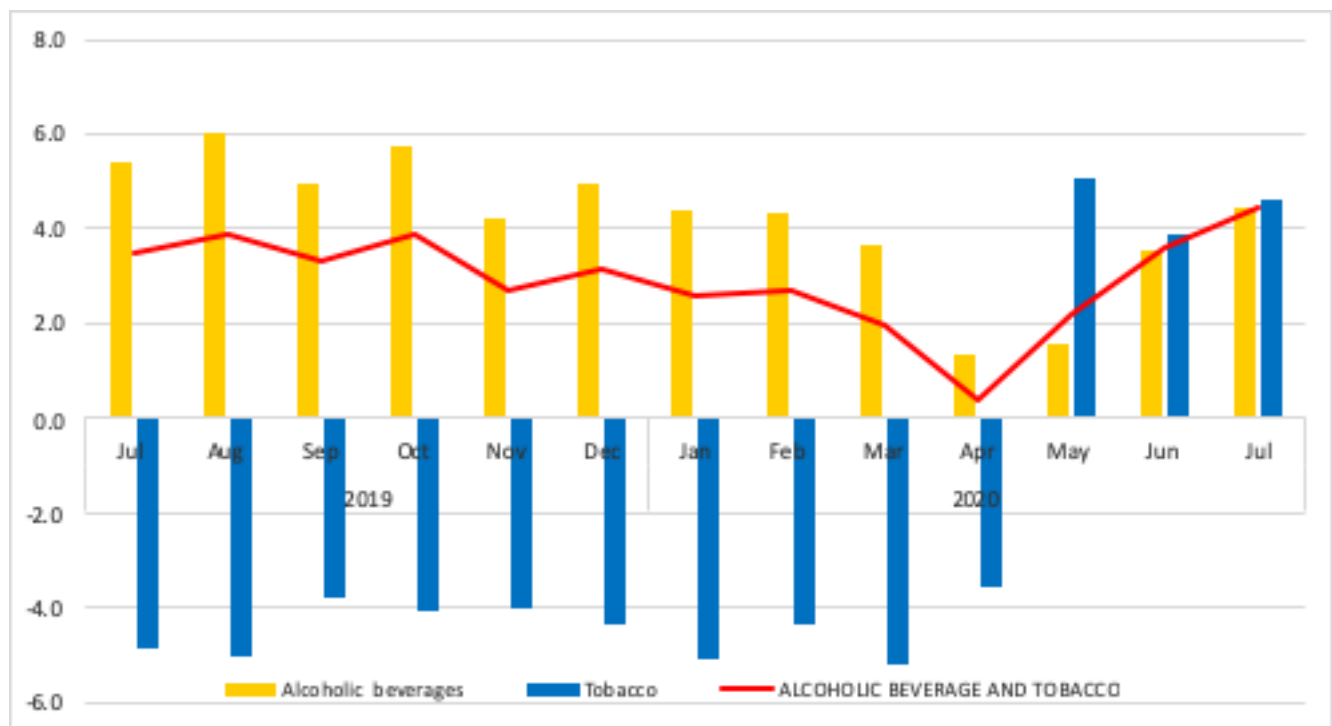


## Alcoholic beverages and tobacco

For the month of July 2020, the annual inflation rate for the Alcoholic beverages and tobacco group stood at 4.5 percent in July 2020 compared to 3.5 percent registered in July of last year, resulting in an increase of 1.0 percentage points. The upward movement of inflation rate in this category during the reporting period was due to the price increases in the Tobacco sub component from -4.9 percent to 4.6 percent.

The monthly inflation rate for this group stood at 0.8 percent compared to 1.4 percent registered during the preceding month.

**Chart 4: Annual inflation rate (%) for Alcoholic beverages and tobacco; July 2020 (Dec 2012 = 100)**



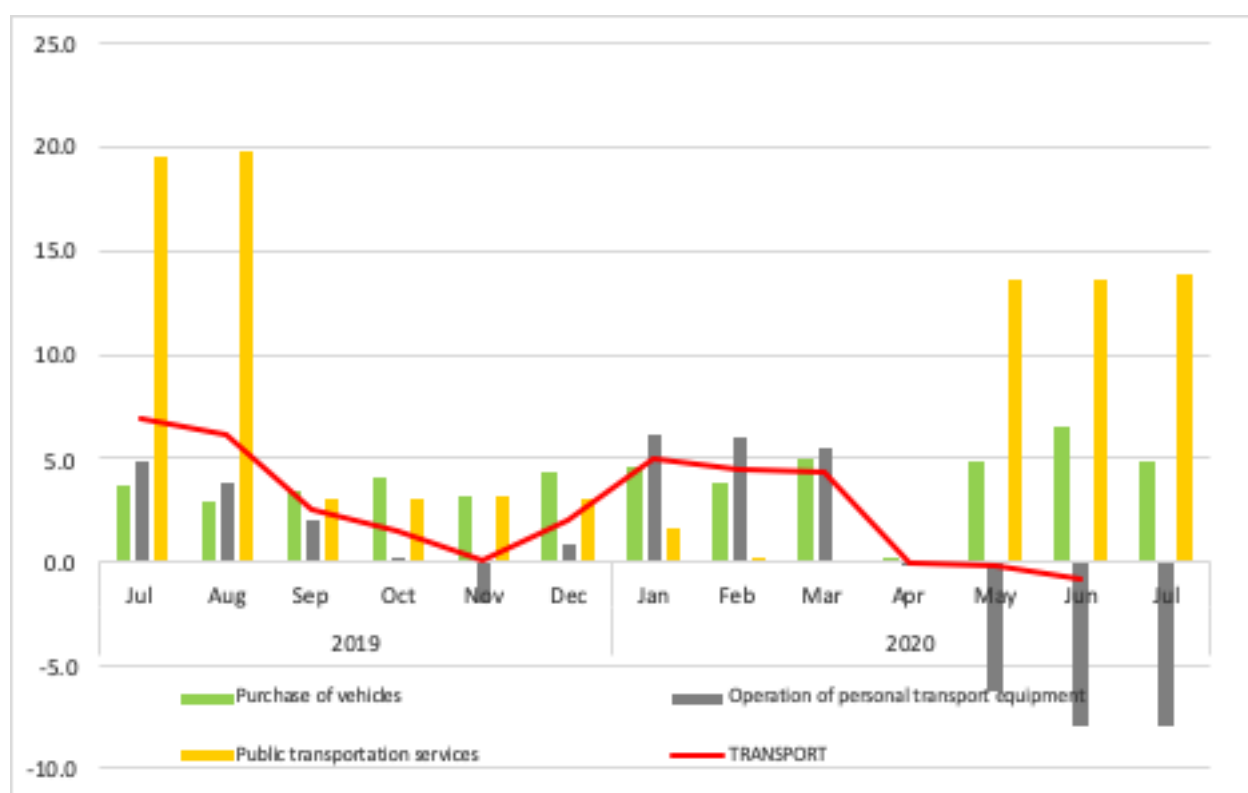


## Transport

The annual inflation rate for the Transport category stood at -1.2 percent during the month of July 2020, resulting in a decrease of 8.1 percentage points from 6.9 percent recorded in July 2019. The decrease was mainly reflected in the price levels of Operation of personal transport equipment (from 4.9 percent to -7.9 percent), caused by a drop in the level of fuel prices which fell from (6.7 percent to -18.9 percent) between July 2019 and July 2020 and Public transportation services (from 19.6 percent to 13.9 percent).

On a monthly basis, Transport recorded a downward trend to 0.1 percent in July 2020 compared with 0.4 percent recorded in the previous month.

**Chart 5: Annual inflation rate (%) for Transport; July 2020 (Dec 2012 = 100)**

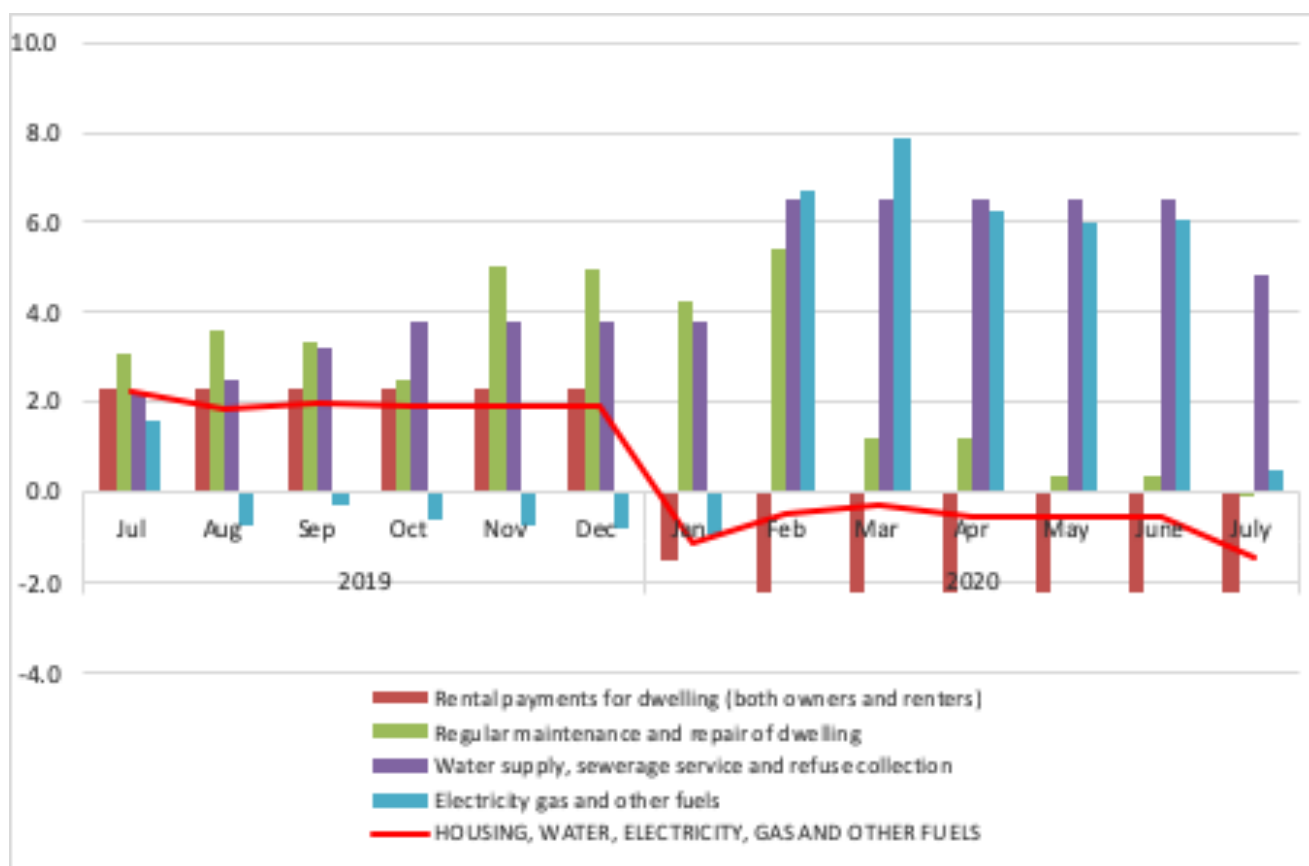


## Housing, water, electricity, gas and other fuels

The annual inflation rate for Housing, water, electricity, gas and other fuels component stood at -1.5 percent in July 2020 compared to 2.2 percent recorded during the same period of July 2019. The decline was mainly as a result of decreases experienced in the price levels of Rental payments for dwelling which declined (from 2.3 percent to -2.3 percent), Regular maintenance and repair of dwelling (from 3.1 percent to 0.0 percent) and Electricity, gas and other fuels (from 1.6 percent to 0.5 percent).

On a monthly basis, the inflation rate for this component remained unchanged at 0.1 percent.

**Chart 6: Annual inflation rate (%) for Housing, water, electricity, gas and other fuels; July 2020 (Dec 2012 = 100)**

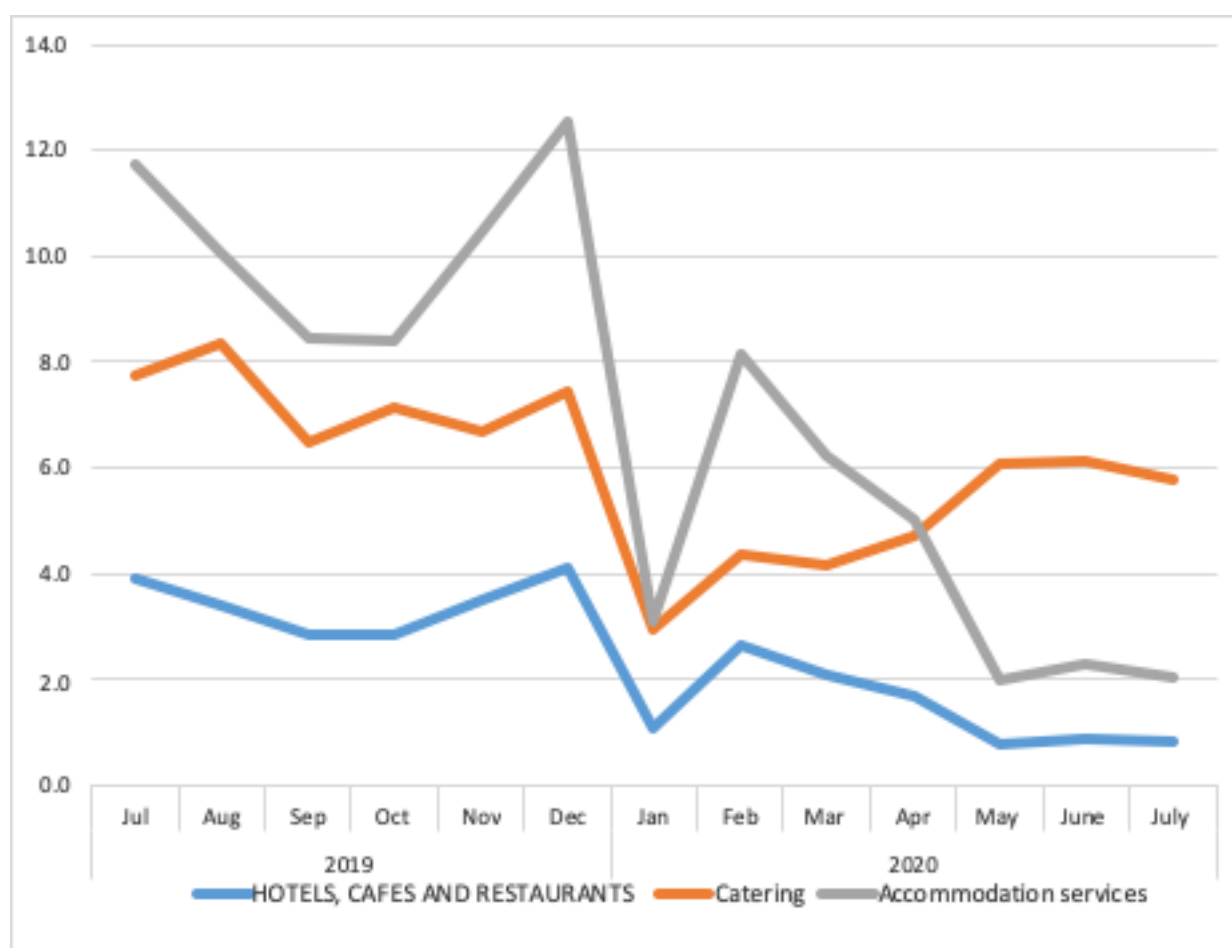


## Hotels, cafes and restaurants

For July 2020, the annual inflation rate for this group slowed to 0.8 percent compared to 3.9 percent obtained during the same period a year earlier. The decrease in the price levels of this group emanated from Accommodation services (from 4.0 percent to -3.7 percent).

The monthly inflation rate for this group decreased to -0.2 percent in July 2020 compared to 0.2 percent recorded a month earlier.

**Chart 7: Annual inflation rate (%) for Hotels, cafes and restaurants; July 2020 (Dec 2012 = 100)**

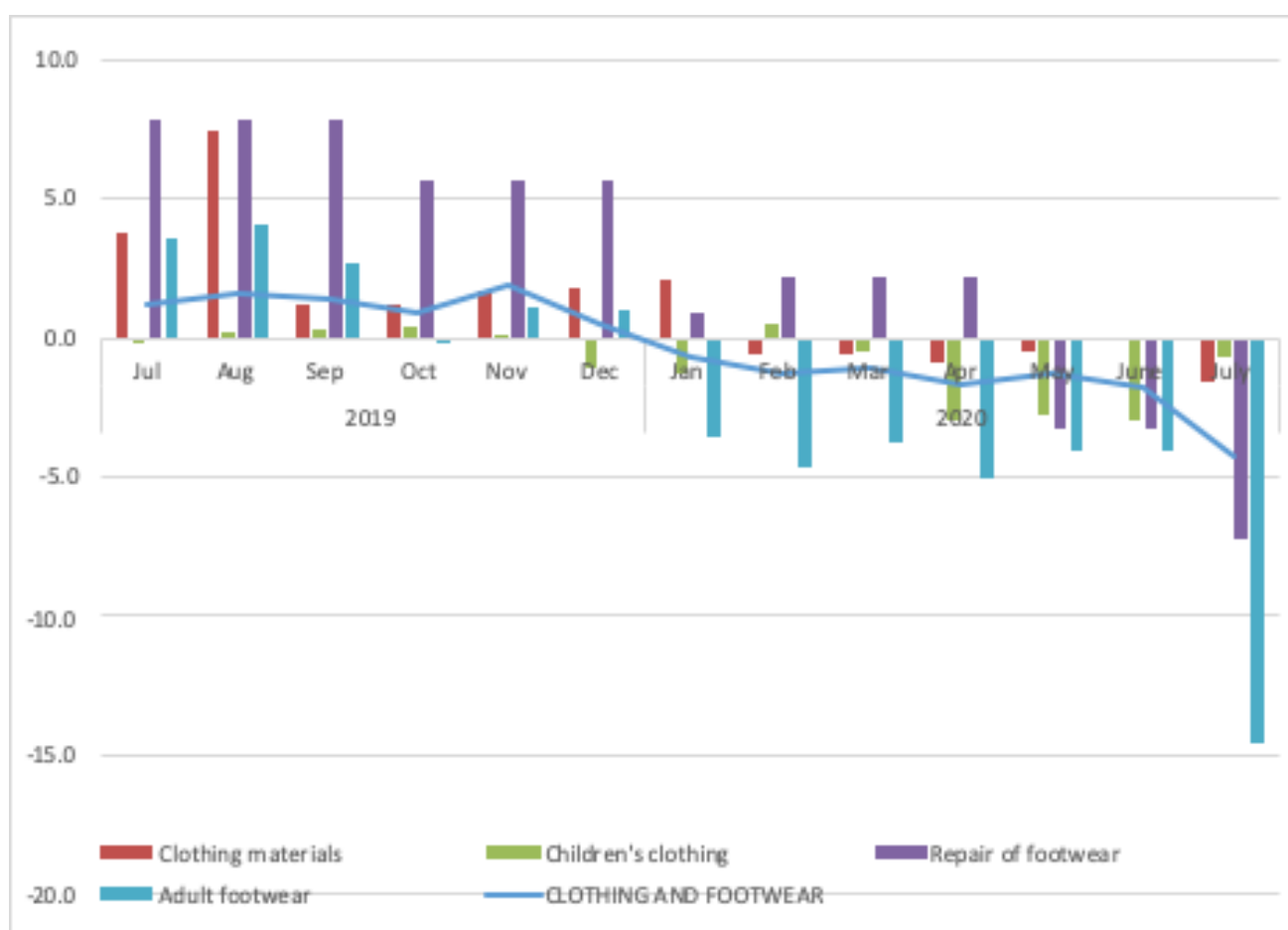


## Clothing and footwear

During the month of July 2020, the annual inflation rate for Clothing and footwear stood at -4.3 percent compared to 1.2 percent recorded in July 2019. The decrease was mainly attributed to price decreases in Adult footwear (from 3.6 percent to -14.6 percent), Repair of footwear (from 7.8 percent to -7.3 percent) and Clothing materials (from 3.8 percent to -1.0 percent) and Footwear (from 3.5 percent to -10.1 percent)

The monthly inflation rate for this group declined to -2.4 percent in July 2020 compared to 0.3 percent registered during the preceding month.

**Chart 8: Annual inflation rates (%) for Clothing and footwear July 2020 (Dec 2012 = 100)**

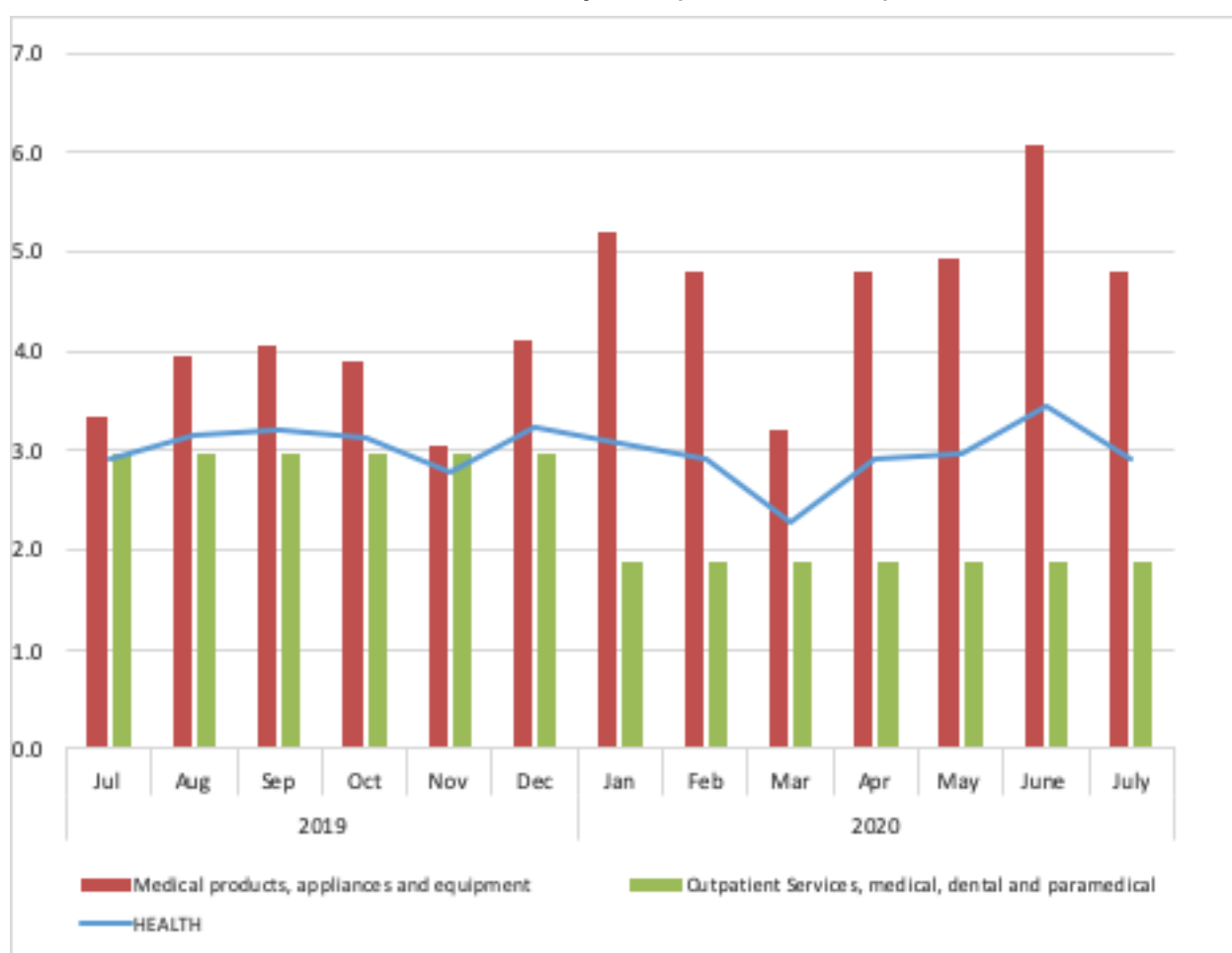


## Health

The annual inflation rate for the Health group stood at 2.9 percent in July 2020, remaining unchanged when compared to the same period a year earlier. However, noticeable price changes in an upward trend was observed during the period under review emanating particularly from increases recorded in the sub-group of Medical products, appliances and equipment (from 3.3 percent to 4.8 percent). While there was a drop in prices for outpatient services, medical, dental and paramedical from 3 percent to 1.9 percent during the period under review.

On a monthly basis this category recorded -0.3 percent in July 2020 compared to 0.5 percent registered a month earlier.

**Chart 9: Annual inflation rate for Health, July 2020 (Dec 2012 = 100)**

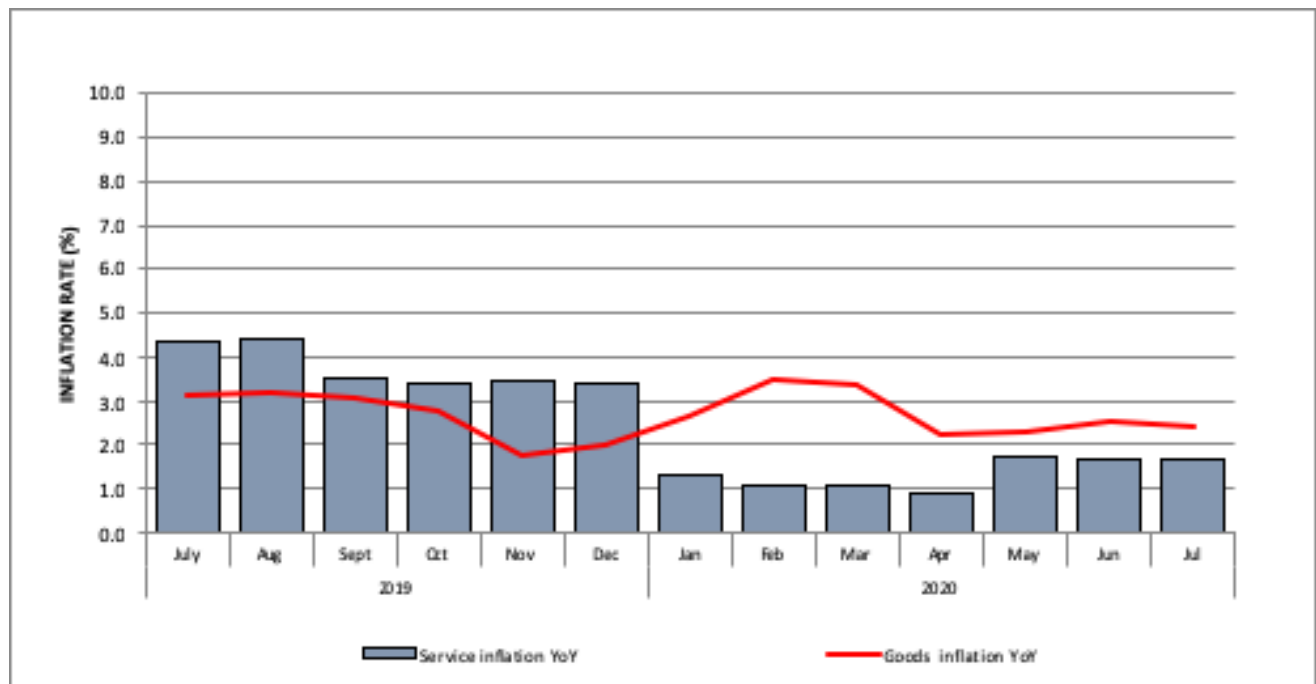




## Goods and Services inflation rates

The Index for Goods and Services for the month of July 2020, stood at 141.9 and 138.7 compared to the corresponding indices of 138.5 and 136.5 recorded during the same period last year. The monthly and annual inflation rates for Goods were 0.3 percent and 2.4 percent, respectively, while for Services the inflation rate were 0.1 percent and 1.6 percent.

**Chart 10: Goods and Services annual inflation rates (%); July 2020 (Dec 2012 = 100)**



## Zonal CPIs

### Zone 1 CPI (Northern Part)

The annual inflation rate fell to 2.1 percent in July 2020 from 3.3 percent recorded in July last year, a decrease of -1.2 percentage points. The decrease in the annual inflation rate resulted mainly from declines in the price levels of Clothing and footwear (from 1.6 percent to -8.6 percent); Transport (from 6.9 percent to -1.0 percent); Housing, water, electricity, gas and other fuels (from 1.3 percent to -2.8 percent).

On a monthly basis, the inflation rate for July 2020 unchanged from that of 0.2 registered in the previous month.

**Table 1: Zone 1 CPI: All-Items Index, monthly and annual percentage changes (Dec 2012 =100)**

Period		Monthly Index	Monthly inflation rate	Annual inflation rate
2019	Jan	136.1	1.0	4.2
	Feb	135.8	-0.2	4.1
	Mar	136.0	0.2	4.1
	Apr	136.1	0.1	3.8
	May	136.3	0.1	3.3
	Jun	136.5	0.2	3.5
	Jul	137.1	0.5	3.3
	Aug	137.3	0.1	3.5
	Sep	137.7	0.3	3.0
	Oct	137.8	0.1	2.8
	Nov	138.5	0.5	2.2
	Dec	138.1	-0.3	2.5
	An. Av	136.9	0.2	3.4
2020	Jan	139.7	1.2	2.7
	Feb	139.6	-0.1	2.8
	Mar	139.5	0.0	2.6
	Apr	139.0	-0.4	2.1
	May	139.4	0.3	2.3
	June	139.7	0.2	2.4
	July	140.0	0.2	2.1

## Zone 2 CPI (Windhoek Area)

The annual inflation rate stood at 2.5 percent lower than 3.0 percent recorded in July 2019. The decrease was mainly witnessed in Education (from 15.2 percent to 6.4 percent), Transport (from 6.0 percent to -0.3 percent), Hotels, cafes and restaurants (from 6.4 percent to 0.7 percent) and Housing, water electricity, gas and other fuels (from 2.5 percent to -1.1 percent).

On a monthly basis, the inflation rate stood at 0.3 percent compared to 0.2 percent recorded during the previous month.

**Table 1: Zone 2 CPI: All-Items Index, monthly and annual percentage changes (Dec 2012 =100)**

Period		Monthly Index	Monthly inflation rate	Annual inflation rate
2019	Jan	133.7	1.4	4.9
	Feb	133.3	0.0	4.4
	Mar	133.7	0.3	4.6
	Apr	134.7	0.8	5.0
	May	133.9	-0.6	4.1
	Jun	133.9	0.0	3.7
	Jul	133.8	-0.1	3.0
	Aug	133.8	0.0	3.1
	Sep	134.5	0.5	2.7
	Oct	134.7	0.2	2.5
	Nov	134.7	-0.1	1.9
	Dec	134.8	0.1	2.2
	An. Av	134.1	0.2	3.5
2020	Jan	135.1	0.2	1.0
	Feb	136.1	0.8	2.1
	Mar	136.3	0.2	2.0
	Apr	135.8	-0.4	0.8
	May	136.4	0.5	1.9
	Jun	136.7	0.2	2.1
	Jul	137.1	0.3	2.5

## Zone 3 CPI (Eastern, Southern & Western Parts of Namibia)

The annual inflation rate slowed to 1.5 percent in July 2020 from 5.1 percent recorded in July 2019. The decline resulted mainly from decreases recorded in all groups, except for Furnishings, household equipment and routine maintenance of the house which increased from (2.1 percent to 2.7 percent), Recreation and culture (2.6 percent to 3.6 percent) and Miscellaneous goods services (2.2 percent to 4.4 percent).

On a monthly basis, the inflation rate for July 2020 remained stagnant compared to 0.1 percent recorded in the preceding month.

**Table 1: Zone 3 CPI: All-Items Index, monthly and annual percentage changes (Dec 2012 = 100)**

Period		Monthly Index	Monthly inflation rate	Annual inflation rate
2019	Jan	142.3	1.0	4.9
	Feb	142.9	0.4	4.9
	Mar	143.1	0.1	4.9
	Apr	143.3	0.1	4.8
	May	144.0	0.5	5.1
	June	144.4	0.2	4.9
	July	144.9	0.3	5.1
	Aug	145.2	0.2	4.9
	Sep	145.2	0.03	4.4
	Oct	145.5	0.20	4.1
	Nov	145.5	-0.01	3.6
	Dec	145.4	-0.1	3.2
	Av	144.3	0.3	4.6
2020	Jan	146.1	0.5	2.7
	Feb	146.5	0.3	2.5
	Mar	146.7	0.2	2.5
	Apr	146.5	-0.2	2.2
	May	146.8	0.2	1.9
	Jun	147.0	0.1	1.8
	Jul	147.0	0.0	1.5

## BOX 3: NCPI BASKET WEIGHTS

Inflation is calculated based on a basket of goods and services, containing a representative sample of the goods and or services commonly consumed in a country, and weighted in accordance with the relative percentage of expenditure allotted to each of the said goods at household level. The price of these goods and services are then tracked over time, to illustrate the change in the cost of living over time. As spending patterns change, new products and services are added to the basket, and the basket is reweighted so as to better capture the current spending patterns of the consumer at the current point in time.

As such, the inflation basket is generally reconstituted every five years. In Namibia, the basket was last rebased in 2013, using household expenditure data collected in the 2009/10 Household Income and Expenditure Survey. The basket now contains over 350 items, grouped into 12 categories and 55 sub-categories, for which prices are collected on a monthly basis from more than 900 retail outlets.

Namibian inflation however, is largely determined by three categories of the overall NCPI basket, namely: (i) Housing, water, electricity, gas and other fuels, (ii) Food and non-alcoholic beverages and (iii) Transport, which cumulatively make up just under 60 percent of the total inflation basket. Additionally, following the rebasing of the NCPI basket in 2013, “Alcoholic beverages and tobacco” make up an additional 12.6 percent of the basket, meaning that the four largest categories represent well over 70 percent of the total basket. As such, a large increase in inflation in these categories has a greater impact on the overall inflation than increases in the lower weighted categories. Thus, it is rare to see major increases in overall inflation attributed to the lower weighted categories, despite the fact that these categories may have seen relatively high inflation in their own right.

Category	Weights (%)
Housing, Water, Electricity, Gas and Other Fuels	28.36
Food and Non- Alcoholic Beverages	16.45
Transport	14.28
Alcoholic Beverages and Tobacco	12.59
Furnishings, Household Equipment....	5.47
Miscellaneous Goods and Services	5.39
Communication	3.81
Education	3.65
Recreation and Culture	3.55
Clothing and Footwear	3.05
Health	2.01
Hotels, Cafés and Restaurants	1.39



**Annex A: NCPI: All-Items Index, monthly and annual percentage changes (Dec 2012 =100)**

Period	Index	m-o-m	y-o-y
Sep-17	127.8	0.4	5.6
Oct-17	127.9	0.1	5.2
Nov-17	128.2	0.3	5.2
Dec-17	128.4	0.2	5.2
<b>An. Av</b>	<b>127.2</b>	<b>0.4</b>	<b>6.2</b>
Jan-18	130.5	1.6	3.6
Feb-18	130.7	0.1	3.5
Mar-18	130.9	0.1	3.5
Apr-18	131.3	0.3	3.6
May-18	131.8	0.4	3.8
Jun-18	132.1	0.2	4.0
Jul-18	132.8	0.5	4.5
Aug-18	132.9	0.0	4.4
Sep-18	133.9	0.8	4.8
Oct-18	134.4	0.4	5.1
Nov-18	135.4	0.7	5.6
Dec-18	135.0	-0.2	5.1
<b>An. Av</b>	<b>132.6</b>	<b>0.4</b>	<b>4.3</b>
Jan-19	136.6	1.2	4.7
Feb-19	136.5	-0.1	4.4
Mar-19	136.8	0.2	4.5
Apr-19	137.2	0.4	4.5
May-19	137.2	-0.1	4.1
Jun-19	137.3	0.1	3.9
Jul-19	137.7	0.2	3.6
Aug-19	137.8	0.1	3.7
Sep-19	138.2	0.3	3.3
Oct-19	138.5	0.2	3.0
Nov-19	138.7	0.2	2.5
Dec-19	138.5	-0.1	2.6
<b>An. Av</b>	<b>137.6</b>	<b>0.2</b>	<b>3.7</b>
Jan-20	139.4	0.6	2.1
Feb-20	139.8	0.3	2.5
Mar-20	140.0	0.1	2.4
Apr-20	139.5	-0.3	1.6
May-20	140.0	0.4	2.1
Jun-20	140.3	0.2	2.1
Jul-20	140.5	0.2	2.1

## Annex B: NCPI for July 2020 by main groups and sub-groups (Dec.2012=100)

	Weights	CPI			Inflation Rate	
		Jul-19	Jun-20	Jul-20	m-o-m	y-o-y
<b>ALL ITEMS</b>	<b>100.00</b>	<b>137.7</b>	<b>140.3</b>	<b>140.5</b>	<b>0.2</b>	<b>2.1</b>
<b>GOODS</b>	<b>57.7</b>	<b>138.5</b>	<b>141.5</b>	<b>141.9</b>	<b>0.3</b>	<b>2.4</b>
<b>SERVICES</b>	<b>42.3</b>	<b>136.5</b>	<b>138.7</b>	<b>138.7</b>	<b>0.1</b>	<b>1.6</b>
<b>FOOD AND NON-ALCOHOLIC BEVERAGES</b>	<b>16.45</b>	<b>146.4</b>	<b>154.3</b>	<b>155.3</b>	<b>0.7</b>	<b>6.1</b>
Food	14.78	147.8	155.8	157.0	0.7	6.2
Bread and cereals	4.84	140.6	140.3	142.2	1.4	1.2
Meat	3.53	144.9	159.3	160.2	0.6	10.6
Fish	0.81	154.2	161.3	162.8	0.9	5.5
Milk, cheese and eggs	1.17	149.4	155.2	155.5	0.2	4.1
Oils and fats	0.78	130.6	140.3	141.1	0.6	8.1
Fruit	0.33	177.4	215.3	203.4	-5.5	14.7
Vegetables including potatoes and other tubers	1.23	168.0	187.5	191.5	2.1	14.0
Sugar, jam, honey, syrups, chocolate and confectionery	1.44	161.6	167.5	167.9	0.2	3.9
Food products n.e.c.	0.65	142.9	149.2	149.6	0.3	4.7
Non-alcoholic beverages	1.66	134.1	140.6	140.5	-0.1	4.8
Coffee, tea and cocoa	0.31	162.1	178.4	177.5	-0.5	9.5
Mineral waters, soft drinks and juices	1.35	127.6	131.9	132.0	0.1	3.5
<b>ALCOHOLIC BEVERAGES AND TOBACCO</b>	<b>12.59</b>	<b>149.1</b>	<b>154.6</b>	<b>155.8</b>	<b>0.8</b>	<b>4.5</b>
Alcoholic beverages	9.99	155.0	160.5	161.8	0.8	4.4
Tobacco	2.61	126.9	131.8	132.7	0.7	4.6
<b>CLOTHING AND FOOTWEAR</b>	<b>3.05</b>	<b>103.5</b>	<b>101.5</b>	<b>99.0</b>	<b>-2.4</b>	<b>-4.3</b>
Clothing	2.04	105.5	104.2	103.9	-0.3	-1.6
Clothing materials	0.07	146.8	146.0	145.3	-0.5	-1.0
Ready-made clothing	1.93	103.9	102.5	102.1	-0.3	-1.7
Men's clothing	0.58	110.8	108.3	106.7	-1.5	-3.7
Women's clothing	0.70	92.1	91.4	91.3	-0.1	-0.8
Children's clothing	0.66	108.7	107.5	108.0	0.5	-0.7
Boys' clothing	0.24	110.0	106.1	105.4	-0.7	-4.2
Girls' clothing	0.33	108.6	107.6	109.3	1.6	0.7
Infants' clothing	0.09	107.7	112.9	112.3	-0.5	4.3
Other articles of clothing and clothing accessories	0.05	115.0	115.1	117.5	2.1	2.1
Dry cleaning, repair and hire of clothing	0.00	130.7	136.1	136.0	-0.1	4.0
Footwear	1.01	99.2	96.1	89.2	-7.1	-10.1
Adult footwear	0.80	93.6	88.6	80.0	-9.8	-14.6
Children's footwear	0.20	118.4	123.3	123.5	0.2	4.3
Repair of footwear	0.01	151.6	140.6	140.6	0.0	-7.3
<b>HOUSING, WATER, ELECTRICITY, GAS AND OTHER FUELS</b>	<b>28.36</b>	<b>135.3</b>	<b>133.3</b>	<b>133.4</b>	<b>0.1</b>	<b>-1.5</b>
Rental payments for dwelling (both owners and renters)	23.28	129.7	126.8	126.8	0.0	-2.3
Regular maintenance and repair of dwelling	0.19	141.6	140.7	141.5	0.6	0.0
Water supply, sewerage service and refuse collection	1.03	178.1	185.7	186.7	0.6	4.8
Electricity gas and other fuels	3.86	157.7	158.3	158.5	0.1	0.5

## Annex B: NCPI for July 2020 by main groups and sub-groups (Dec.2012=100)

	Weights	CPI			Inflation Rate	
		May-19	April-20	May-20	m-o-m	y-o-y
<b>FURNISHINGS, HOUSEHOLD EQUIPMENT AND ROUTINE MAINTENANCE OF THE HOUSE</b>	<b>5.47</b>	<b>126.4</b>	<b>130.0</b>	<b>129.3</b>	<b>-0.6</b>	<b>2.3</b>
Furniture, furnishings, decorations, carpets, floor coverings, incl. repairs	1.78	98.8	101.2	98.5	-2.7	-0.4
Furniture and furnishings	1.69	97.4	99.8	96.9	-2.9	-0.5
Carpets and other floor coverings	0.07	108.7	109.8	110.0	0.2	1.1
Repair of furnishings and floor coverings	0.02	199.1	201.3	201.2	0.0	1.0
Household textiles	0.73	133.7	137.2	137.0	-0.2	2.4
Heating and cooking appliances, refrigerators, washing machines and similar major household appliances, etc	0.92	124.3	128.4	128.5	0.1	3.4
Glassware, tableware and household utensils	0.22	152.9	153.3	153.9	0.4	0.6
Tools and equipment for house and garden	0.43	129.9	134.7	135.8	0.8	4.6
Goods and services for routine household maintenance	1.36	154.6	159.5	159.7	0.2	3.4
<b>HEALTH</b>	<b>2.01</b>	<b>135.6</b>	<b>139.9</b>	<b>139.5</b>	<b>-0.3</b>	<b>2.9</b>
Medical products, appliances and equipment	0.84	130.7	137.9	136.9	-0.7	4.8
Outpatient Services, medical, dental and paramedical	0.98	146.5	149.3	149.3	0.0	1.9
Hospital services	0.19	100.0	100.0	100.0	0.0	0.0
<b>TRANSPORT</b>	<b>14.28</b>	<b>136.2</b>	<b>134.4</b>	<b>134.6</b>	<b>0.1</b>	<b>-1.2</b>
Purchase of vehicles	2.88	155.4	164.6	163.0	-1.0	4.8
Operation of personal transport equipment	8.96	129.5	118.4	119.2	0.7	-7.9
Public transportation services	2.44	138.5	157.6	157.7	0.0	13.9
<b>COMMUNICATIONS</b>	<b>3.81</b>	<b>108.1</b>	<b>110.6</b>	<b>110.6</b>	<b>0.0</b>	<b>2.3</b>
<b>RECREATION AND CULTURE</b>	<b>3.55</b>	<b>134.1</b>	<b>142.3</b>	<b>142.8</b>	<b>0.3</b>	<b>6.5</b>
Audio-visual, photographic and data processing equip. incl. repairs	1.16	119.1	127.5	128.4	0.7	7.8
Other major durables for recreation and culture	0.08	131.6	136.6	140.6	3.0	6.9
Other recreational items and equipment; flowers, gardens and pets	0.46	129.1	139.4	137.5	-1.4	6.5
Recreation and cultural services	0.85	141.3	143.2	143.2	0.0	1.3
Newspapers, books and stationery	0.89	142.8	152.4	154.0	1.0	7.8
Package holidays	0.11	186.3	224.2	222.6	-0.7	19.5
<b>EDUCATION</b>	<b>3.65</b>	<b>167.3</b>	<b>179.0</b>	<b>179.0</b>	<b>0.0</b>	<b>7.0</b>
Pre-primary education (ages 2 to 6 years)	0.23	190.5	201.2	201.2	0.0	5.6
Primary (private) and Secondary education (ages 7 to 17 years)	1.44	177.8	194.3	194.3	0.0	9.3
Tertiary education	1.98	157.0	165.3	165.3	0.0	5.3
<b>HOTELS, CAFES AND RESTAURANTS</b>	<b>1.39</b>	<b>148.0</b>	<b>149.5</b>	<b>149.2</b>	<b>-0.2</b>	<b>0.8</b>
Catering	0.74	144.6	151.8	151.7	0.0	5.0
Accommodation services	0.65	151.9	146.9	146.3	-0.4	-3.7
<b>MISCELLANEOUS GOODS AND SERVICES</b>	<b>5.39</b>	<b>132.1</b>	<b>139.9</b>	<b>139.9</b>	<b>0.0</b>	<b>5.9</b>
Personal care	1.41	137.6	140.2	139.6	-0.5	1.4
Personal effects n.e.c.	1.03	126.1	129.0	129.8	0.6	2.9
Insurance	0.74	101.7	106.9	106.9	0.0	5.1
Financial services n.e.c.	0.94	168.1	186.1	186.1	0.0	10.7
Other services n.e.c.	1.26	122.1	133.7	133.7	0.0	9.5

## Annex 1: Background on Zonal Consumer Price Index

---

Since January 2005, the then Central Bureau of Statistics (CBS) under the National Planning Commission (NPC) published a monthly Consumer Price Index known as the Namibia Consumer Price Index (NCPI) for replacing the Interim Consumer Price Index (ICPI) which has been in existence since 1993. The Index was known as the Interim Consumer Prices Index-Windhoek and refers to the expenditure patterns of the households which resided in Windhoek. The weights and items were derived from a Household Expenditure Survey covering 800 households conducted during October and November 1985.

The NCPI is designed to cover the entire economic territory of the country and includes national, urban and rural households of all income groups as derived from the Namibia Household Income and Expenditure Survey (NHIES). For the compilation of the National CPI, all administrative regions of the country were grouped into three Zones, with each zone considered as one geographic area as follows.

**Zone 1** covers the expenditure patterns of the regions in the northern part of the country namely Kavango East, Kavango West, Kunene, Ohangwena, Omusati, Oshana, Oshikoto, Otjozondjupa and Zambezi. Prices are collected from the following towns: Katima Mulilo (76 retail outlets covering mainly the Central Business District); Oshakati (107 retail outlets covering mainly Game Shopping Center, Yetu Shopping Center, Oshana Mall, Marula Mall and Ongwediva); and Otjiwarongo (114 retail outlets covering mainly the Central Business District, Orwetoveni, and the Industrial Area).

**Zone 2** covers the expenditure patterns of Khomas region and the price collection covers Windhoek (218 retail outlets covering mainly Khomasdal, Katutura, Northern Industrial Area, Southern Industrial Area, Pioneers Park, Hochland Park, Prosperita, Klein Windhoek, Eros and Kleine Kuppe).

**Zone 3** covers the expenditure patterns of //Karas, Erongo, Hardap, and Omaheke regions with prices being collected from Keetmanshoop (86 retail outlets covering mainly Central Business District, West Dene and Tseiblagte); Swakopmund (108 retail outlets covering Central Business District, Mondesa, Tamariskia, Industrial Area); Mariental (61 retail outlets covering mainly Central Business District and Ombili); as well as Gobabis (59 retail outlets mainly covering the Central Business District), respectively.

The localities identified for price collection were selected based on a mixed criterion of:

- (i) the relative importance of the locality as determined by its relative share exceeding 30 percent of the total household expenditure at national level;
- (ii) geographic distribution of economic activities; and
- (iii) regional capitals.

## Annex 2: Zonal NCPI weights

	NCPI MAIN GROUPS	Weights		
		ZONE 1	ZONE 2	ZONE 3
1	Food and non-alcoholic beverages	20.4	12.3	16.5
2	Alcoholic beverages and tobacco	13.1	11.0	14.3
3	Clothing and footwear	3.9	2.4	2.6
4	Housing, water, electricity, gas and other fuels	25.8	32.7	25.5
5	Furnishings, household equipment and routine maintenance of the house	5.8	5.2	5.3
6	Health	1.6	2.3	2.2
7	Transport	14.7	13.0	15.6
8	Communications	3.5	3.8	4.4
9	Recreation and culture	2.2	4.8	3.7
10	Education	3.2	4.5	3.1
11	Hotels, cafes and restaurants	0.9	2.0	1.1
12	Miscellaneous goods and services	4.8	5.8	5.6
	<b>All items</b>	<b>100.0</b>	<b>100.0</b>	<b>100.0</b>

## Additional detailed information on Zonal CPIs see excel tables as Annex.

Note: The above Zonal CPIs time series run from 2018 only for illustrative purposes and for comparing with the previous years. However, the figures for Zonal CPIs are available since the NCPI inception in 2002.

### Annex I: Zone 1

- (i) Table 1: CPI Zone 1: All-Items Index, monthly and annual percentage changes
- (ii) Table 2: CPI Zone 1 Indices
- (iii) Table 3: CPI Zone 1 Monthly Percentage Changes
- (iv) Table 4: CPI Zone 1 Annual Percentage Changes

### Annex II: Zone 2

- (v) Table 1: CPI Zone 2: All-Items Index, monthly and annual percentage changes
- (vi) Table 2: CPI Zone 2 Indices
- (vii) Table 3: CPI Zone 2 Monthly Percentage Changes
- (viii) Table 4: CPI Zone 2 Annual Percentage Changes

### Annex III: Zone 3

- (ix) Table 1: CPI Zone 3: All-Items Index, monthly and annual percentage changes
- (x) Table 2: CPI Zone 3 Indices
- (xi) Table 3: CPI Zone 3 Monthly Percentage Changes
- (xii) Table 4: CPI Zone 3 Annual Percentage Changes



# Namibia Consumer Price Index Bulletin

JULY 2020



Namibia Statistics Agency (NSA), FGI House,  
44 Post Street Mall, Windhoek, Namibia,  
P.O.Box 2133, Windhoek, Namibia  
Tel: 061-431 3200, Fax: 061-4313253  
[www.nsa.org.na](http://www.nsa.org.na)